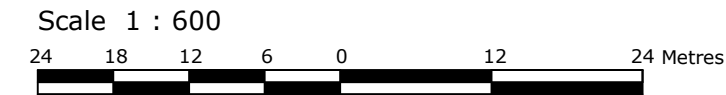


PLAN OF SURVEY OF
PART OF DIVISION 1 OF LOT 29,
CONCESSION 1
 (GEOGRAPHIC TOWNSHIP OF NORMANBY)
 MUNICIPALITY OF WEST GREY
 COUNTY OF GREY



WILSON-FORD

THE INTENDED PLOT SIZE OF THE PLAN IS 381mm IN WIDTH BY 813mm IN HEIGHT WHEN PLOTTED AT A SCALE OF 1:1000

METRIC CONVERSION

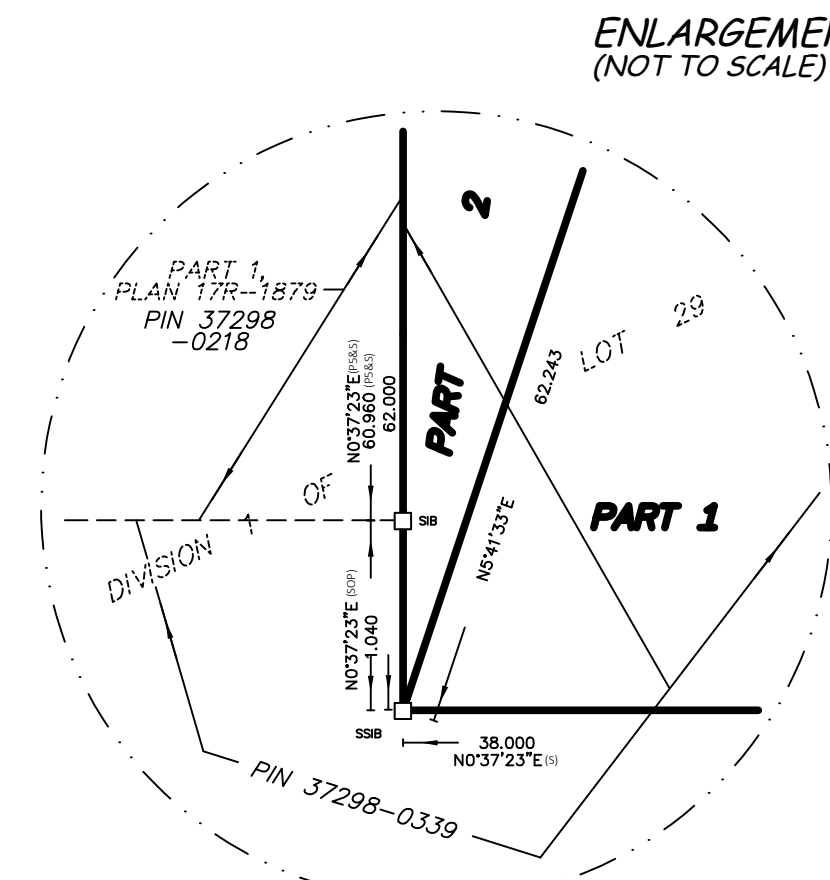
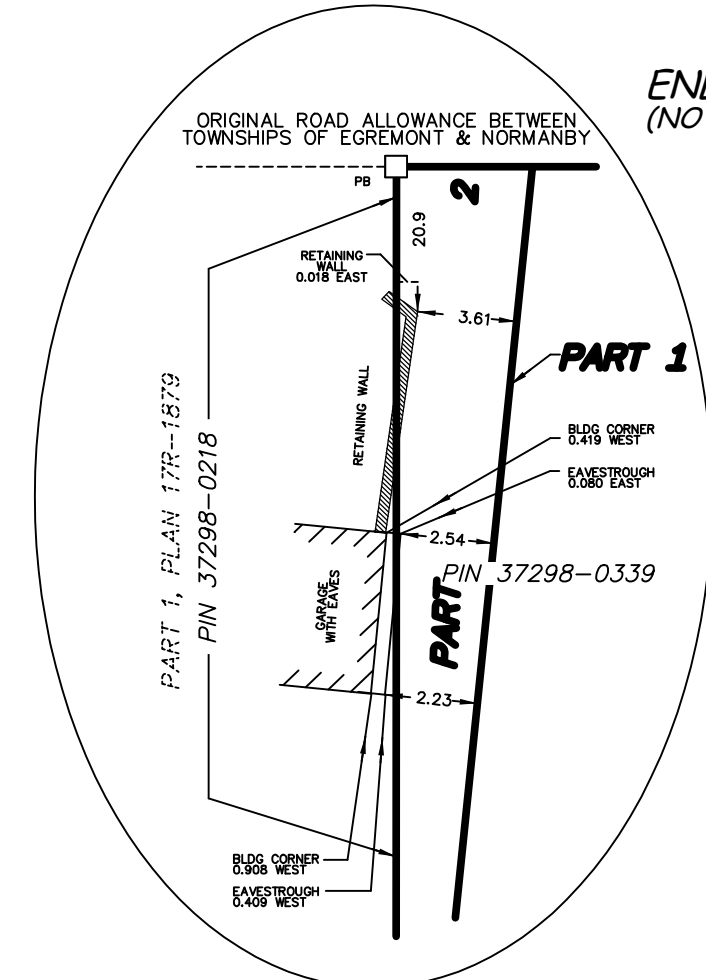
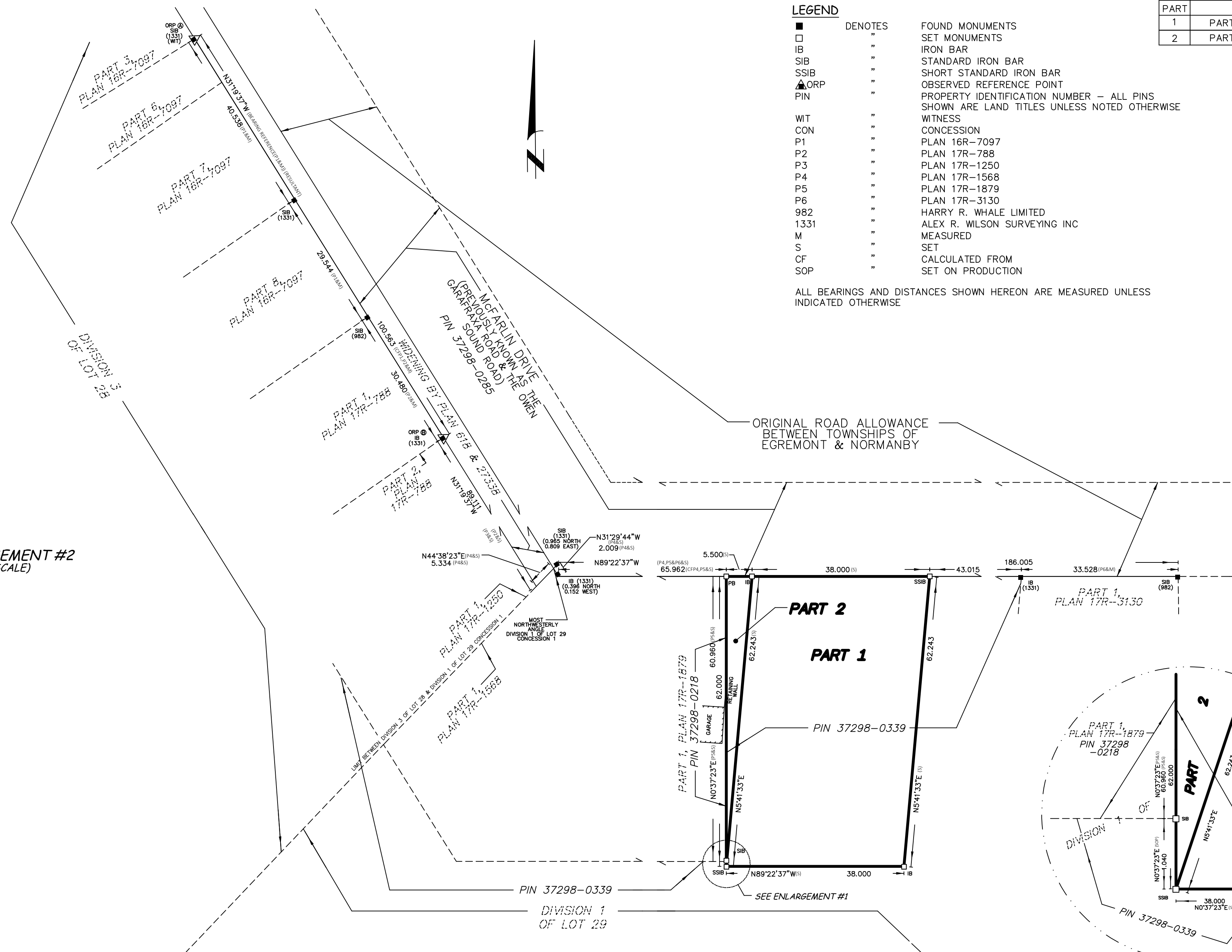
DISTANCES AND COORDINATES SHOWN ON THIS PLAN ARE IN METRES AND CAN BE CONVERTED TO FEET BY DIVIDING BY 0.3048

SCHEDULE			
PART	LOT	CONCESSION	PIN
1	PART OF DIVISION 1 OF LOT 29	1	PART OF 37298-0339
2	PART OF DIVISION 1 OF LOT 29		PART OF 37298-0339

LEGEND

- | | | |
|------|---------|--|
| ■ | DENOTES | FOUND MONUMENTS |
| □ | " | SET MONUMENTS |
| IB | " | IRON BAR |
| SIB | " | STANDARD IRON BAR |
| SSIB | " | SHORT STANDARD IRON BAR |
| ▲ | ORP | OBSERVED REFERENCE POINT |
| PIN | " | PROPERTY IDENTIFICATION NUMBER - ALL PINS SHOWN ARE LAND TITLES UNLESS NOTED OTHERWISE |
| WIT | " | WITNESS |
| CON | " | CONCESSION |
| P1 | " | PLAN 16R-7097 |
| P2 | " | PLAN 17R-788 |
| P3 | " | PLAN 17R-1250 |
| P4 | " | PLAN 17R-1568 |
| P5 | " | PLAN 17R-1879 |
| P6 | " | PLAN 17R-3130 |
| 982 | " | HARRY R. WHALE LIMITED |
| 1331 | " | ALEX R. WILSON SURVEYING INC |
| M | " | MEASURED |
| S | " | SET |
| CF | " | CALCULATED FROM |
| SOP | " | SET ON PRODUCTION |

ALL BEARINGS AND DISTANCES SHOWN HEREON ARE MEASURED UNLESS INDICATED OTHERWISE



BEARING NOTE

BEARINGS ARE UTM GRID, DERIVED FROM OBSERVED REFERENCE POINTS A AND B BY REAL TIME NETWORK (RTN) OBSERVATIONS, UTM ZONE 17, NAD83 (CSRS) (2010).

FOR BEARING COMPARISONS, THE FOLLOWING ROTATIONS WERE USED:

PLAN	ROTATION
P1, P2, P3, P4, P5 & P6	0°10'07" CCW

DISTANCES ON THIS PLAN ARE GROUND AND CAN BE CONVERTED TO GRID BY MULTIPLYING BY THE COMBINED SCALE FACTOR OF 0.999553.

OBSERVED REFERENCE POINTS (ORP'S) DERIVED FROM GPS OBSERVATIONS USING THE TOPNET NETWORK (RTN), UTM ZONE 17, NAD83 (CSRS)(2010)

COORDINATES TO URBAN ACCURACY PER SEC. 12(2) OF O. REG. 216/10.

POINT ID	NORTHING	EASTING
ORP (A)	4 871 987.346	518 231.138
ORP (B)	4 871 901.479	518 283.401

COORDINATES CANNOT, IN THEMSELVES, BE USED TO RE-ESTABLISH CORNERS OR BOUNDARIES SHOWN ON THIS PLAN.

SURVEYOR'S CERTIFICATE

I CERTIFY THAT :

- THIS SURVEY AND PLAN ARE CORRECT AND IN ACCORDANCE WITH THE SURVEYS ACT, THE SURVEYORS ACT, THE LAND TITLES ACT AND THE REGULATIONS MADE UNDER THEM.
- THE SURVEY WAS COMPLETED ON THE 21st DAY OF NOVEMBER 2025.

25 NOVEMBER, 2025

DATE

PRELIMINARY

GREG FORD, P. Eng (CIVIL)
 ONTARIO LAND SURVEYOR

THIS PLAN OF SURVEY RELATES TO AOLS
 PLAN SUBMISSION FORM NUMBER XXXX

WILSON - FORD
 Surveying & Engineering Ltd.
 118 NORPARK AVENUE., Box 294,
 MOUNT FOREST ON, NOG 2L0
 PHONE (519)323-2451

PROJECT No.: 25-10185 PLUME