



NewLifeMills-Ayton-Farm7-MDS 2

Barn 4 to the Kinsella House

General information

---

Application date

Sep 10, 2025

Municipal file number

Applicant contact information

Cheryl Hill  
New Life Mills-div of Parish & Heimbecker  
PO Box 218  
252 -14th Street  
Hanover, ON  
N4N 3C5  
519-369-4328  
chill@newlifemills.com

Location of subject livestock facilities

County of Grey  
Township of West Grey  
NORMANBY  
Concession 8 , Lot 21  
Roll number: 420501000201900

Notes

Farm 7 located at 122019 Concession 8 West Grey

Calculations

Barn 4 to Kinsella house

Notes  
Adding barn 4 before the 3 year wait is up

Livestock/manure summary


Manure Form	Type of livestock/manure	Existing maximum	Total after alteration	Estimated livestock barn area
Solid	Chickens, Layer hens (for eating eggs; after transfer from pullet barn), Cages	110000 (733.3 <u>NU</u> )	220000 (1466.7 <u>NU</u> )	NA

Setback summary

Existing manure storage	Storage already exists		
Existing design capacity	733.3 NU		
Design capacity after alteration	1466.7 NU		
Factor A (odour potential)	1	Factor B (design capacity)	808.27
Factor C (orderly expansion)	0.8737	Factor D (manure type)	0.7

Building base distance 'F' (A x B x C x D) (minimum distance from livestock barn)	495 m (1624 ft)
Storage base distance 'S' (minimum distance from manure storage)	No manure storage construction

Setback distance summary

Description	Building setbacks	
Type A land uses	Minimum 495 (1624 ft)	Actual 418 m (1372 ft) 
Type B land uses	Minimum 990 (3248 ft)	Actual 2411 m (7910 ft)
Nearest lot line (side or rear)	Minimum 30 (98 ft)	Actual 237 m (776 ft)
Nearest road allowance	Minimum 60 (197 ft)	Actual 146 m (479 ft)

**Preparer signoff & disclaimer**

---

**Preparer contact information**

Jeff Bannerman  
Crop Quest Inc.  
520 Inkerman Street E  
Listowel, ON  
N4W 2N7  
519-292-0496  
jbannerman4@wightman.ca

**Signature of preparer**

---

Jeff Bannerman

09-11-2025

---

Date (mmm-dd-yyyy)**Note to the user**

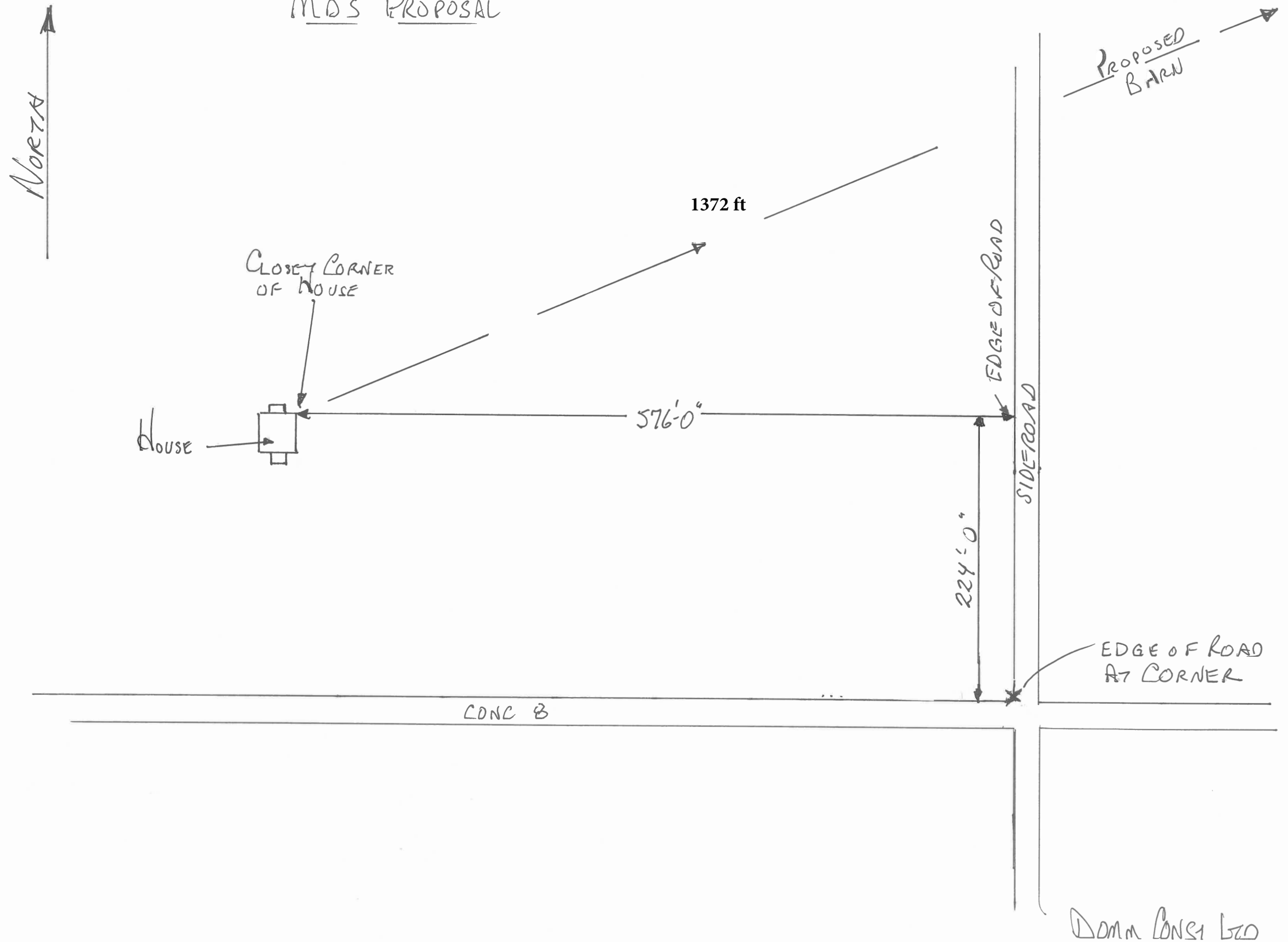
The Ontario Ministry of Agriculture, Food and Agribusiness (OMAFRA) has developed this software program for distribution and use with the Minimum Distance Separation (MDS) Formulae as a public service to assist farmers, consultants, and the general public. This version of the software distributed by OMAFA will be considered to be the official version for purposes of calculating MDS. OMAFA is not responsible for errors due to inaccurate or incorrect data or information; mistakes in calculation; errors arising out of modification of the software, or errors arising out of incorrect inputting of data. All data and calculations should be verified before acting on them.

© King's Printer for Ontario, 2012-25

Google Earth

# FISHER FARM #7

## MDS PROPOSAL





NewLifeMills-Ayton-Farm7-MDS 2

Barn 4 to the Matt Jacobs House

General information

---

Application date

Sep 10, 2025

Municipal file number

Applicant contact information

Cheryl Hill  
New Life Mills-div of Parish & Heimbecker  
PO Box 218  
252 -14th Street  
Hanover, ON  
N4N 3C5  
519-369-4328  
chill@newlifemills.com

Location of subject livestock facilities

County of Grey  
Township of West Grey  
NORMANBY  
Concession 8 , Lot 21  
Roll number: 420501000201900

Notes

Farm 7 located at 122019 Concession 8 West Grey

Calculations

Barn 4 to Matt Jacobs house

Notes  
Adding Barn 4 Laying Hen barn before 3 year wait is up

Livestock/manure summary


Manure Form	Type of livestock/manure	Existing maximum	Total after alteration	Estimated livestock barn area
Solid	Chickens, Layer hens (for eating eggs; after transfer from pullet barn), Cages	110000 (733.3 <u>NU</u> )	220000 (1466.7 <u>NU</u> )	NA

Setback summary

Existing manure storage	Storage already exists		
Existing design capacity	733.3 <u>NU</u>		
Design capacity after alteration	1466.7 <u>NU</u>		
Factor A (odour potential)	1	Factor B (design capacity)	808.27
Factor C (orderly expansion)	0.8737	Factor D (manure type)	0.7

Building base distance 'F' (A x B x C x D) (minimum distance from livestock barn)	495 m (1624 ft)
Storage base distance 'S' (minimum distance from manure storage)	No manure storage construction

Setback distance summary

Description	Building setbacks	
Type A land uses	Minimum 495 (1624 ft)	Actual 488 m (1600 ft) 
Type B land uses	Minimum 990 (3248 ft)	Actual 2411 m (7910 ft)
Nearest lot line (side or rear)	Minimum 30 (98 ft)	Actual 237 m (776 ft)
Nearest road allowance	Minimum 60 (197 ft)	Actual 146 m (479 ft)

**Preparer signoff & disclaimer**

---

**Preparer contact information**

Jeff Bannerman  
Crop Quest Inc.  
520 Inkerman Street E  
Listowel, ON  
N4W 2N7  
519-292-0496  
jbannerman4@wightman.ca

**Signature of preparer**

---

Jeff Bannerman

09-11-2025

---

Date (mmm-dd-yyyy)**Note to the user**

The Ontario Ministry of Agriculture, Food and Agribusiness (OMAFRA) has developed this software program for distribution and use with the Minimum Distance Separation (MDS) Formulae as a public service to assist farmers, consultants, and the general public. This version of the software distributed by OMAFA will be considered to be the official version for purposes of calculating MDS. OMAFA is not responsible for errors due to inaccurate or incorrect data or information; mistakes in calculation; errors arising out of modification of the software, or errors arising out of incorrect inputting of data. All data and calculations should be verified before acting on them.

© King's Printer for Ontario, 2012-25



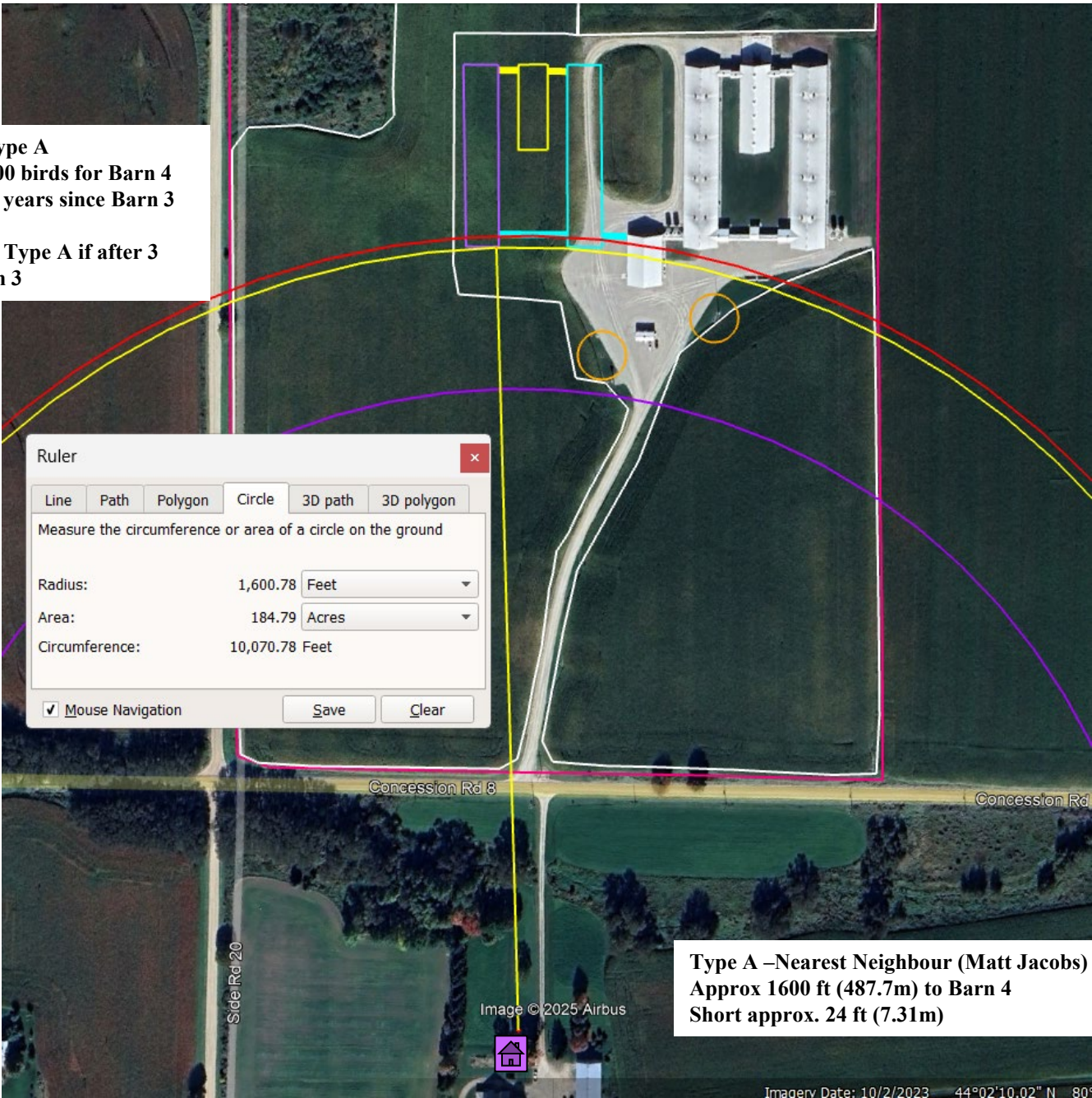
122019 Concession 8  
West Grey  
Lot 21 Concession 8  
Normanby Twp

# New Life Mills – Fisher Poultry – Farm 7

Sept 10, 2025

Red Line - 1624 ft to Type A  
2025 expansion of 55,000 birds for Barn 4  
Due to being less than 3 years since Barn 3

Purple Line – 1312 ft to Type A if after 3  
years from start of Barn 3





122019 Concession 8  
West Grey  
Lot 21 Concession 8  
Normanby Twp

# New Life Mills – Fisher Poultry – Farm 7

Covered Manure Storages  
175ft x 60ft x 8ft deep



Red Line - 1624 ft to Type A  
2025 expansion of 55,000 birds for Barn 4  
Due to being less than 3 years since Barn 3

Purple Line – 1312 ft to Type A if after 3  
years from start of Barn 3

Updated Sept 10, 2025

Type A –Nearest Neighbour (Kinsella)  
Derelict unused house  
Approx 1372 ft (418m) to Barn 4  
Short approx. 252 ft (76.8m)

- Tile Outlet- none
- Catch Basin- none
- Drilled Well  
50 ft Manure  
application setback

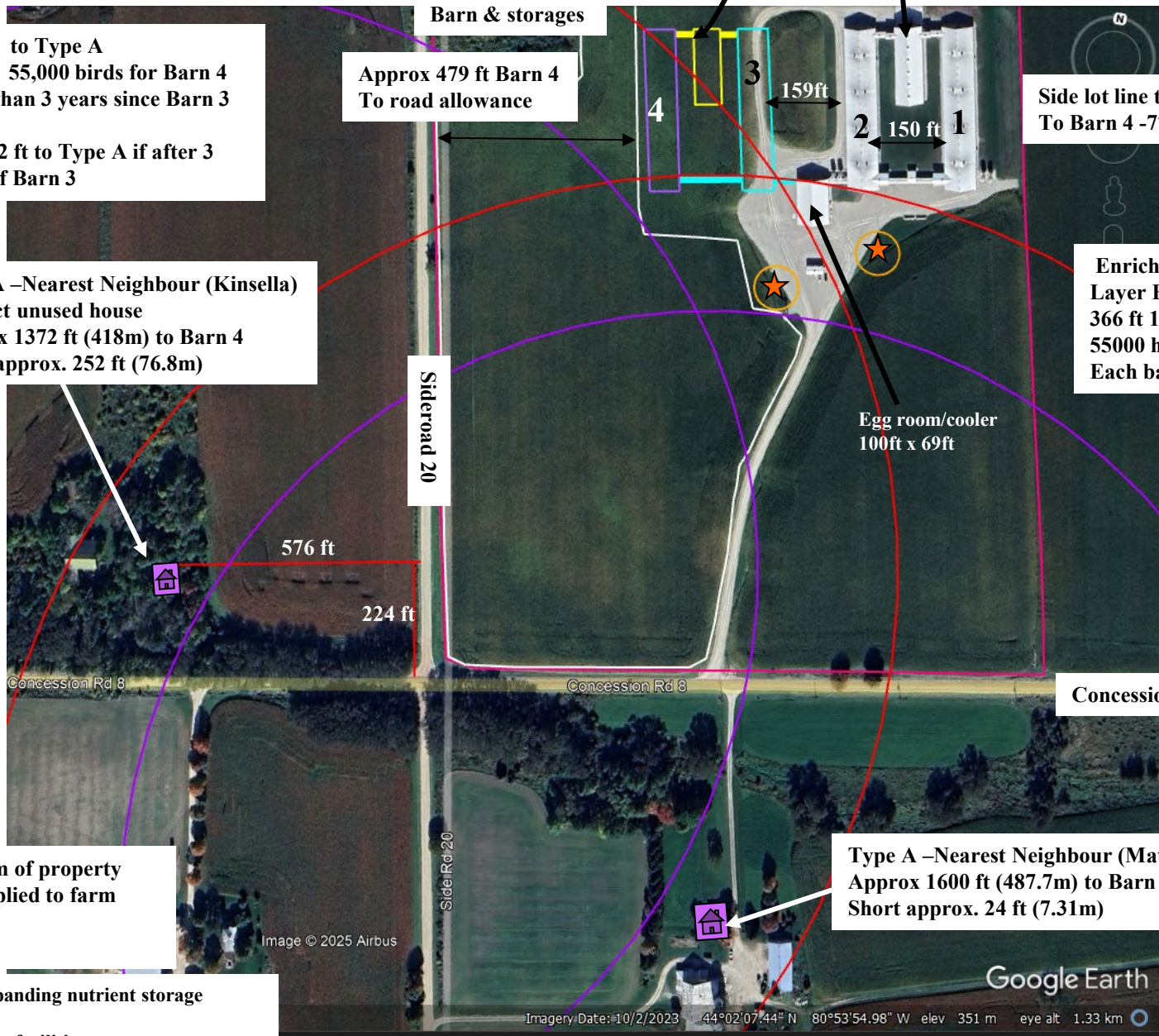
45 ft between  
Barn & storages

Approx 479 ft Barn 4  
To road allowance

Side lot line to approx.  
To Barn 4 -775 ft

Enriched Cage  
Layer Barns  
366 ft 10” x 69ft  
55000 hens in  
Each barn

Egg room/cooler  
100ft x 69ft



No Municipal Well within 100 m of property  
No Non Ag Source Material applied to farm  
No Surface water on this farm  
No Tile drainage in farm

Type A –Nearest Neighbour (Matt Jacobs)  
Approx 1600 ft (487.7m) to Barn 4  
Short approx. 24 ft (7.31m)

No drilled well within 15 m of expanding nutrient storage  
No other wells within 30m of  
new or expanding nutrient storage facilities



NewLifeMills-Ayton-Farm7-MDS 2

Example if Barn 4 was to wait till after 3yrs

General information

---

Application date

Jul 10, 2025

Municipal file number

Applicant contact information

Cheryl Hill  
New Life Mills-div of Parish & Heimbecker  
PO Box 218  
252 -14th Street  
Hanover, ON  
N4N 3C5  
519-369-4328  
chill@newlifemills.com

Location of subject livestock facilities

County of Grey  
Township of West Grey  
NORMANBY  
Concession 8 , Lot 21  
Roll number: 420501000201900

Notes

Farm 7 located at 122019 Concession 8 West Grey

## Calculations

### Barn 4 after 3 years

#### Livestock/manure summary

Manure Form	Type of livestock/manure	Existing maximum	Total after alteration	Estimated livestock barn area
Solid	Chickens, Layer hens (for eating eggs; after transfer from pullet barn), Cages	165000 (1100 NU)	220000 (1466.7 NU)	NA

#### Setback summary

Existing manure storage      **Storage already exists**

Existing design capacity      **1100 NU**

Design capacity after alteration      **1466.7 NU**

Factor A (odour potential)      **1**

Factor B (design capacity)      **808.27**

Factor C (orderly expansion)      **0.7067**

Factor D (manure type)      **0.7**

Building base distance 'F' (A x B x C x D)  
(minimum distance from livestock barn)

**400 m (1312 ft)**

Storage base distance 'S'  
(minimum distance from manure storage)

**No manure storage construction**

#### Setback distance summary

Description	Building setbacks	
Type A land uses	<b>Minimum</b> 400 (1312 ft)	<b>Actual</b> 418 m (1372 ft)
Type B land uses	<b>Minimum</b> 800 (2625 ft)	<b>Actual</b> 2411 m (7910 ft)
Nearest lot line (side or rear)	<b>Minimum</b> 30 (98 ft)	<b>Actual</b> 236 m (775 ft)
Nearest road allowance	<b>Minimum</b> 60 (197 ft)	<b>Actual</b> 146 m (479 ft)

#### Preparer signoff & disclaimer

#### Preparer contact information

Jeff Bannerman  
Crop Quest Inc.  
520 Inkerman Street E  
Listowel, ON  
N4W 2N7  
519-292-0496  
jbannerman4@wightman.ca

**Signature of preparer**

---

Jeff Bannerman

07-10-2025

---

Date (mmm-dd-yyyy)**Note to the user**

The Ontario Ministry of Agriculture, Food and Agribusiness (OMAFRA) has developed this software program for distribution and use with the Minimum Distance Separation (MDS) Formulae as a public service to assist farmers, consultants, and the general public. This version of the software distributed by OMAFA will be considered to be the official version for purposes of calculating MDS. OMAFA is not responsible for errors due to inaccurate or incorrect data or information; mistakes in calculation; errors arising out of modification of the software, or errors arising out of incorrect inputting of data. All data and calculations should be verified before acting on them.

© King's Printer for Ontario, 2012-25