



Stage 3 Archaeological Assessment, BaHe-16,
311804 Highway 6, Mount Forest, Part Lot 20,
Concession 1 West of Owen Sound Road,
Geographic Township of Normanby, now
Municipality of West Grey, Grey County, Ontario

Project Number: 2023-0076

PIF: P243-0512-2023

Report Type: Supplementary Documents

Report Date: November 15, 2023

Licensee: Dr. Carla Parslow, RPA, CAHP

Parslow Heritage Consultancy Inc.

883 St. Clair Ave. West, Toronto, ON,
M6C 1C4

Teeswater Concrete

1201 Bruce Road 6, Teeswater, ON N0G 2S0

Table of Contents

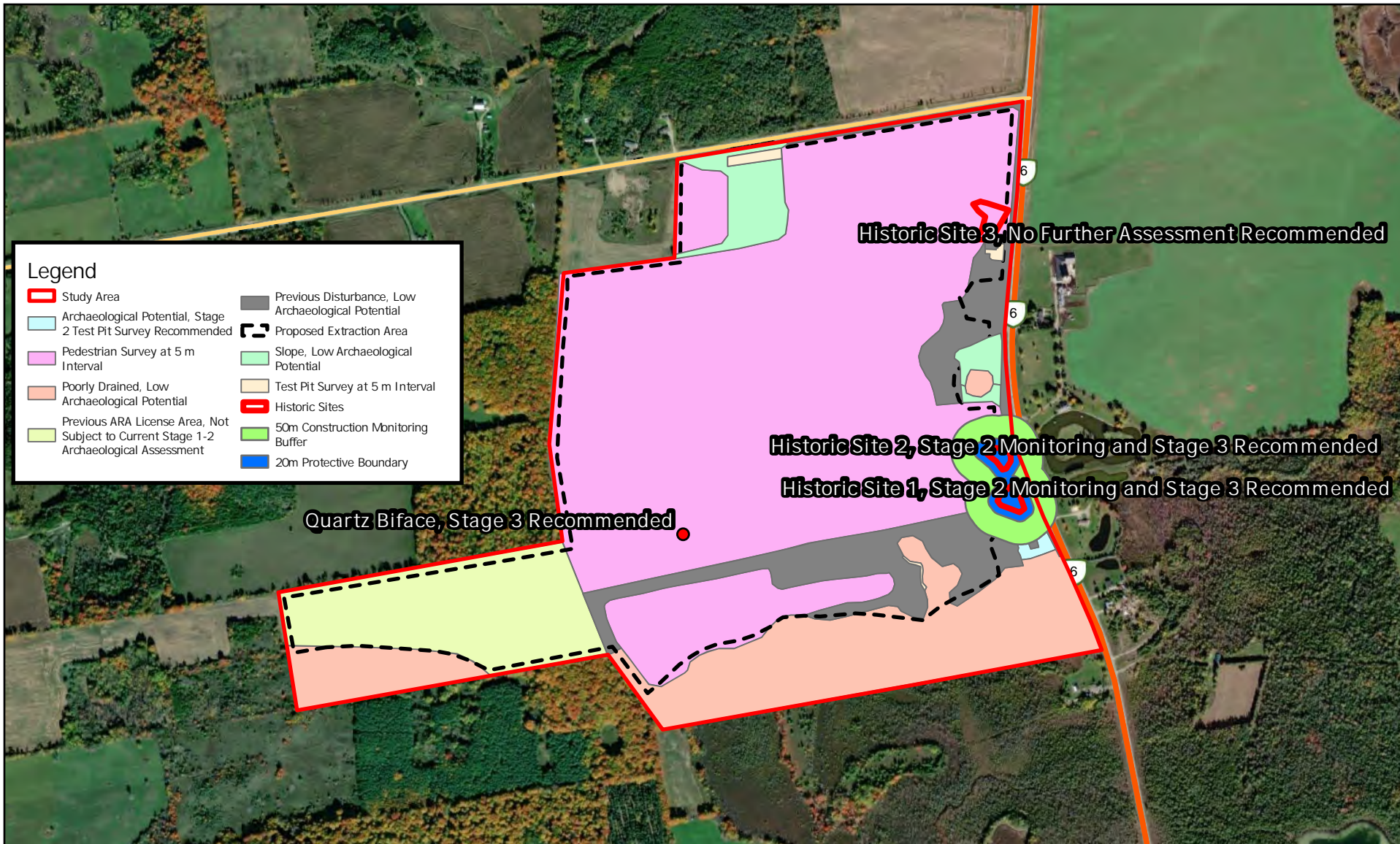
Supplement A – Additional Mapping	2
Supplement B – GPS Coordinates	4

Maps

Map 1: Location of Sites.....	3
-------------------------------	---

Supplement A – Additional Mapping

Additional mapping follows on the succeeding page. To provide context for BaHe-16, the Stage 2 archaeological assessment results are shown on the mapping



Legend

- Study Area
- Archaeological Potential, Stage 2 Test Pit Survey Recommended
- Pedestrian Survey at 5 m Interval
- Poorly Drained, Low Archaeological Potential
- Previous ARA License Area, Not Subject to Current Stage 1-2 Archaeological Assessment
- Previous Disturbance, Low Archaeological Potential
- Proposed Extraction Area
- Slope, Low Archaeological Potential
- Test Pit Survey at 5 m Interval
- 50m Construction Monitoring Buffer
- Historic Sites
- 20m Protective Boundary

Stage 3 Archaeological Assessment, Teeswater Concrete Mount Forest Property

Map A: Location of Archaeological Sites

Maxar

Coordinate System: NAD 1983 UTM Zone 17N



Scale 1: 12,000



Supplement B – GPS Coordinates

GPS coordinates were recorded using the Geo Tracker application on a Samsung S20 FE with a minimum accuracy of 1 m.

TABLE 1: BAHE-16 STAGE 3 GPS COORDINATES

Findspot	UTM	Easting	Northing
Biface location	17T	515741.07	4876546.27

© Parslow Heritage Consultancy Inc.

883 St. Clair Avenue West, Rear, Toronto, ON, M6C 1C4

Telephone: [647-348-4887](tel:647-348-4887)

Email: admin@phcgroup.ca

Website: www.phcgroup.ca

