

**Stage 1-2 Archaeological Assessment
270 Queen Street South
Plan 500, Part of Lots 1 and 2 W/S Queen Street and
Part of Lots 1 and 2 E/S Countess Street, Durham
Municipality of West Grey, County of Grey, Ontario**

Original Report

Submitted to:
Ministry of Citizenship and Multiculturalism

Prepared for:
Candue Homes 2020 Ltd.
280 Elm Street E., Durham, ON

Cobide Engineering Inc.
517 10th Street, Hanover ON

Prepared by:
TMHC Inc.
1108 Dundas Street, Unit 105
London, ON N5W 3A7
519-641-7222
tmhc.ca



Licensee: Liam Browne, MA (P1048)
PIF No: P1048-0143-2024
Project No: 2023-584
Dated: April 23, 2024



EXECUTIVE SUMMARY

A Stage 1 and 2 archaeological assessment was conducted to permit the proposed redevelopment of 270 Queen Street South, Durham in the Municipality of West Grey, Grey County, Ontario. The subject property is roughly 0.53 ha (1.31 ac) in size and comprises part of Lots 1 and 2 W/S Queen Street and part of Lots 1 and 2 E/S Countess Street, Registered Plan 500, Durham which are located within Lot 26, Division 3, Concession 1 West of the Garafraxa Road (WGR) in the Geographic Township of Bentinck. The subject property contains an existing residential dwelling, barn, sheds, gravel driveways, a portion of a built up pathway and lightly treed manicured lawn. In 2023, TMHC was contracted by Candue Homes 2020 Ltd. to conduct the assessment, which was conducted in accordance with the provisions of the *Planning Act* and *Provincial Policy Statement*. The purpose of the assessment was to determine if archaeological resources were present within the subject property.

The Stage 1 background study included a review of current land use, historic and modern maps, past settlement history for the area and a consideration of topographic and physiographic features, soils and drainage. It also involved a review of previously registered archaeological resources within 1 km of the subject property and previous archaeological assessments within 50 m. The background study indicated that the property had potential for the recovery of archaeological resources due the proximity (i.e., within 300 m) of features that signal archaeological potential, namely:

- mapped 19th-century thoroughfares (South Street, Countess Street, Sadler Street and Queen Street);
- areas of 19th-century settlement (Durham) and,
- a source of potable water (Saugeen River).

The subject property consists of non-ploughable lands; these were subject to Stage 2 assessment via standard test pit survey at a 5 m transect interval (84.9%; 0.45 ha), in keeping with provincial standards. The remainder of the subject property consists of built features that were previously disturbed, deemed of low archaeological potential and were photo-documented (15.1%; 0.08 ha).

All work met provincial standards and no archaeological material was documented during the assessment. As such, the subject property should be considered free of archaeological concern and no further archaeological assessment is recommended.

Our recommendations are subject to the conditions laid out in Section 5.0 of this report and to the MCM's review and acceptance of this report into the provincial registry.



TABLE OF CONTENTS

Executive Summary	i
Table of Contents	ii
List of Images	iii
List of Maps	iii
List of Tables	iii
Project Personnel	iv
Acknowledgements	iv
Territorial Acknowledgement	v
Indigenous Participants	vi
About TMHC	vii
Key Staff Bios	vii
Statement of Qualifications and Limitations	viii
Quality Information	ix
1 Project Context	1
1.1 Development Context	1
1.1.1 Introduction	1
1.1.2 Purpose and Legislative Context	2
2 Stage 1 Background Review	3
2.1 Research Methods and Sources	3
2.2 Project Context: Archaeological Context	5
2.2.1 Subject Property: Overview and Physical Setting	5
2.2.2 Summary of Registered or Known Archaeological Sites	6
2.2.3 Summary of Past Archaeological Investigations within 50 m	6
2.2.4 Dates of Archaeological Fieldwork	6
2.3 Project Context: Historical Context	7
2.3.1 Indigenous Settlement in Grey County	7
2.3.2 Treaty History	13
2.3.3 Nineteenth-Century and Municipal Settlement	14
2.3.4 Review of Historic Maps	16
2.3.5 Review of Heritage Properties	16
2.4 Analysis and Conclusions	17
2.5 Recommendations	17
3 Stage 2 Archaeological Assessment	18
3.1 Field Methods	18
3.2 Record of Finds	19
3.3 Analysis and Conclusions	19
3.4 Recommendations	19
4 Summary	20
5 Advice on Compliance with Legislation	21
6 Bibliography	22
7 Images	25
8 Maps	31
SUPPLEMENTARY DOCUMENTATION	43



Summary of Indigenous Engagement 44

LIST OF IMAGES

Image 1: Test Pit Survey at 5 m Interval..... 26

Image 2: Test Pit Survey at 5 m Interval..... 26

Image 3: Test Pit Survey at 5 m Interval..... 27

Image 4: Typical Test Pit 27

Image 5: Typical Test Pit 28

Image 6: Typical Test Pit 28

Image 7: Test Pit in Vicinity of Home with Construction Debris..... 29

Image 8: Residential Dwelling, Gravel Driveway and Shed 29

Image 9: Barn and Gravel Driveway 30

Image 10: Built Up Pathway..... 30

LIST OF MAPS

Map 1: Location of the Subject Property in Durham, ON..... 32

Map 2: Aerial Photograph Showing the Location of the Subject Property..... 33

Map 3: Physiography Within the Vicinity of the Subject Property 34

Map 4: Soils Within the Vicinity of the Subject Property 35

Map 5: Location of the Subject Property Shown on the 1849 Plan of Durham..... 36

Map 6: Subject Property Shown on the 1880 Map of Bentinck Township..... 37

Map 7: Subject Property Shown on a 1945 Topographic Map..... 38

Map 8: Subject Property Shown on a 1945 Topographic Map..... 39

Map 9: Stage 2 Field Conditions and Assessment Methods..... 40

Map 10: Stage 2 Field Conditions and Assessment Methods Shown on Proponent Mapping 41

Map 11: Unaltered Proponent Mapping..... 42

LIST OF TABLES

Table 1: Chronology of Indigenous Settlement in Grey County 7

Table 2: Documentary Records 19



PROJECT PERSONNEL

Project Managers	Liam Browne, MA (P1048)
Project Administrators	Kellie Theaker, CHRP Victoria Scott, MA, MLis
Health and Safety Coordinator	Wendi Jakob, CTech, CAPM
Fieldwork Coordination	Johnathan Freeman, MA (P274) Andrew Turner, BA (R1042) David Gostick, BA
Field Director	Sean Graziano, BA (R1354)
Field Technicians	Marya D'Alessio, MA (R1163) Emily Jurasek, MA Carlee Heslop, BA Jack Houghton, BSc Joshua Cruwys
GIS Technician	David Gostick, BA
Report Writer	Liam Browne, MA (P1048)
Senior Review	Matthew Beaudoin, PhD (P324)

ACKNOWLEDGEMENTS

Dana Kieffer	Cobide Engineering Inc.
Becky Weltz	Candue Homes 2020 Ltd.



TERRITORIAL ACKNOWLEDGEMENT

The subject property is within the traditional territory of Chippewas of Nawash Unceded First Nation and Saugeen First Nation, collectively Saugeen Ojibway Nation (SON). SON's Traditional Territory is bounded on the south by the Maitland River system from Goderich to past Arthur, on the west by the Canada/USA border in the middle of Lake Huron, on the north by a line along the midpoint of the channel between the Saugeen (Bruce) Peninsula and Manitoulin Island, and on the east by a line down the middle of Georgian Bay. The SON also asserts Aboriginal title over that portion of Lake Huron and Georgian Bay within their Territory.

The people of the Chippewas of Nawash and Saugeen First Nations have lived, fished, hunted, and traded throughout these lands for generations and continue to do so today. They have a deep connection to the lands within their traditional territory. This includes cultural heritage: spiritual and sacred sites, artifacts and archaeological sites, built heritage, and cultural heritage landscapes. It also includes care and protection for the Ancestors and their resting places.



INDIGENOUS PARTICIPANTS

Saugeen Ojibway Nation (SON)

Coordinators

Robert Martin

Natalie Kuipers



ABOUT TMHC

Established in 2003 with a head office in London, Ontario, TMHC Inc. (TMHC) provides a broad range of archaeological assessment, heritage planning and interpretation, cemetery, and community consultation services throughout the Province of Ontario. We specialize in providing heritage solutions that suit the past and present for a range of clients and intended audiences, while meeting the demands of the regulatory environment. Over the past two decades, TMHC has grown to become one of the largest privately-owned heritage consulting firms in Ontario and is today the largest predominately woman-owned CRM business in Canada.

Since 2004, TMHC has held retainers with Infrastructure Ontario, Hydro One, the Ministry of Transportation, Metrolinx, the City of Hamilton, and Niagara Parks Commission. In 2013, TMHC earned the Ontario Archaeological Society's award for Excellence in Cultural Resource Management. Our seasoned expertise and practical approach have allowed us to manage a wide variety of large, complex, and highly sensitive projects to successful completion. Through this work, we have gained corporate experience in helping our clients work through difficult issues to achieve resolution.

TMHC is skilled at meeting established deadlines and budgets, maintaining a healthy and safe work environment, and carrying out quality heritage activities to ensure that all projects are completed diligently and safely. Additionally, we have developed long-standing relationships of trust with Indigenous and descendent communities across Ontario and a good understanding of community interests and concerns in heritage matters, which assists in successful project completion.

TMHC is a Living Wage certified employer with the [Ontario Living Wage Network](#) and a member of the [Canadian Federation for Independent Business](#).

KEY STAFF BIOS

Matthew Beaudoin, PhD, Principal/Manager – Archaeological Assessments

Matthew Beaudoin received a Ph.D. in Anthropology from Western University in 2013 and became a Principal at TMHC in 2019. During his archaeological career, Matthew has conducted extensive field research and artifact analysis on Indigenous and Settler sites from Labrador and Ontario. In addition, Matthew has also conducted ethnographic projects in Labrador. Since joining TMHC in 2008, Matthew has been involved with several notable projects, such as the Imperial Oil's Waterdown to Finch Project, the Camp Ipperwash Project, and the Scugog Island Natural Gas Pipeline Project.

Matthew is an active member of the Canadian Archaeological Association, the Ontario Archaeological Association, the Ontario Historical Society, the World Archaeology Congress, the Council for Northeastern Historical Archaeology, the Society for American Archaeology, and the Society for Historical Archaeology.

Liam Browne, MA, Project Manager

Liam is a professional-licensed archaeologist with significant experience managing large archaeological projects and working with First Nations communities.

Liam holds a Masters degree in Anthropology from Trent University specializing in late Paleo projectile points in Ontario and New York. He has worked in various cultural resource management capacities since 2012.



STATEMENT OF QUALIFICATIONS AND LIMITATIONS

The attached Report (the “Report”) has been prepared by TMHC Inc. (TMHC) for the benefit of the Client (the “Client”) in accordance with the agreement between TMHC and the Client, including the scope of work detailed therein (the “Agreement”).

The information, data, recommendations and conclusions contained in the Report (collectively, the “Information”):

- is subject to the scope, schedule, and other constraints and limitations in the Agreement and the qualifications contained in the Report (the “Limitations”);
- represents TMHC’s professional judgment in light of the Limitation and industry standards for the preparation of similar reports;
- may be based on information provided to TMHC which has not been independently verified;
- has not been updated since the date of issuance of the Report and its accuracy is limited to the time period and circumstances in which it was collected, processed, made or issued;
- must be read as a whole and sections thereof should not be read out of such context; and
- was prepared for the specific purposes described in the Report and the Agreement.

TMHC shall be entitled to rely upon the accuracy and completeness of information that was provided to it and has no obligation to update such information. TMHC accepts no responsibility for any events or circumstances that may have occurred since the date on which the Report was prepared and, in the case of subsurface, environmental or geotechnical conditions, is not responsible for any variability in such conditions, geographically or over time.

TMHC agrees that the Report represents its professional judgement as described above and that the Information has been prepared for the specific purpose and use described in the Report and the Agreement, but TMHC makes no other representations, or any guarantees or warranties whatsoever, whether express or implied, with respect to the Report, the Information or any part thereof.

Except (1) as agreed to in writing by TMHC and Client; (2) as required by-law; or (3) to the extent used by governmental reviewing agencies for the purpose of obtaining permits or approvals, the Report and the Information may be used and relied upon only by Client.

TMHC accepts no responsibility, and denies any liability whatsoever, to parties other than Client who may obtain access to the Report or the Information for any injury, loss or damage suffered by such parties arising from their use of, reliance upon, or decisions or actions based on the Report or any of the Information (“improper use of the Report”), except to the extent those parties have obtained the prior written consent of TMHC to use and rely upon the Report and the Information. Any injury, loss or damages arising from improper use of the Report shall be borne by the party making such use.

This Statement of Qualifications and Limitations is attached to and forms part of the Report and any use of the Report is subject to the terms hereof.



QUALITY INFORMATION

Report prepared by:

Liam Browne, MA (P1048)
Project Manager

Report reviewed by:

Matthew Beaudoin, PhD (P324)
Principal/Manager of Archaeological Assessment



I PROJECT CONTEXT

I.1 Development Context

I.1.1 Introduction

A Stage 1 and 2 archaeological assessment was conducted to permit the proposed redevelopment of 270 Queen Street South, Durham in the Municipality of West Grey, Grey County, Ontario. The subject property is roughly 0.53 ha (1.31 ac) in size and comprises part of Lots 1 and 2 W/S Queen Street and part of Lots 1 and 2 E/S Countess Street, Registered Plan 500, Durham which are located within Lot 26, Division 3, Concession 1 West of the Garafraxa Road (WGR) in the Geographic Township of Bentinck. The subject property contains an existing residential dwelling, barn, sheds, gravel driveways, a portion of a built up pathway and lightly treed manicured lawn. In 2023, TMHC was contracted by Candue Homes 2020 Ltd. to conduct the assessment, which was conducted in accordance with the provisions of the *Planning Act* and *Provincial Policy Statement*. The purpose of the assessment was to determine if archaeological resources were present within the subject property.

All archaeological assessment activities were performed under the professional archaeological license of Liam Browne, MA (P1048) and in accordance with the *Standards and Guidelines for Consultant Archaeologists* (MTC 2011, “Standards and Guidelines”). Permission to enter the property and carry out all required archaeological activities, including collecting artifacts when found, was given by Dana Keiffer of Cobide Engineering Inc.



1.1.2 Purpose and Legislative Context

The *Ontario Heritage Act* (R.S.O. 1990) makes provisions for the protection and conservation of heritage resources in the Province of Ontario. Heritage concerns are recognized as a matter of provincial interest in Section 2.6.2 of the *Provincial Policy Statement* (PPS 2020) which states:

development and site alteration shall not be permitted on lands containing archaeological resources or areas of archaeological potential unless significant archaeological resources have been conserved.

In the PPS, the term conserved means:

the identification, protection, management and use of *built heritage resources, cultural heritage landscapes and archaeological resources* in a manner that ensures their cultural heritage value or interest is retained. This may be achieved by the implementation of recommendations set out in a conservation plan, archaeological assessment and/or heritage impact assessment that has been approved, accepted or adopted by the relevant planning authority and/or decision-maker. Mitigative measures and/or alternative development approaches can be included in these plans and assessments.

Sections 2 (d) and 3.5 of the *Planning Act* stipulate that municipalities shall have regard for their conservation of features of significant architectural, cultural, historical, archaeological or scientific interest. Therefore, the purpose of a Stage 1 background study is to determine if there is potential for archaeological resources to be found on a property for which a change in land use is pending. It is used to determine the need for a Stage 2 field assessment involving the search for archaeological sites. In accordance with *Provincial Policy Statement 2.6*, if significant sites are found, a strategy (usually avoidance, preservation or excavation) must be put forth for their mitigation.

2 STAGE I BACKGROUND REVIEW

2.1 Research Methods and Sources

A Stage I overview and background study was conducted to gather information about known and potential cultural heritage resources within the subject property. According to the *Standards and Guidelines*, a Stage I background study must include a review of:

- an up-to-date listing of sites from the Ministry of Citizenship and Multiculturalism (MCM) PastPortal for 1 km around the property;
- reports of previous archaeological fieldwork within a radius of 50 m around the property;
- topographic maps at 1:10,000 (recent and historical) or the most detailed scale available;
- historical settlement maps (e.g., historical atlas, survey);
- archaeological management plans or other archaeological potential mapping when available; and,
- commemorative plaques or monuments on or near the property.

For this project, the following activities were carried out to satisfy or exceed the above requirements:

- a database search was completed through MCM's PastPortal system that compiled a list of registered archaeological sites within 1 km of the subject property (completed January 29, 2024);
- a review of known prior archaeological reports for the property and adjacent lands;
- Ontario Base Mapping (1:10,000) was reviewed through ArcGIS and mapping layers under the Open Government Licence – Canada and the Open Government Licence- Ontario;
- detailed mapping provided by the client was also reviewed; and,
- a series of historic maps and photographs was reviewed related to the post-1800 land settlement.

Additional sources of information were also consulted, including modern aerial photographs, local history accounts, soils data provided by the Ontario Ministry of Agriculture, Food and Rural Affairs (OMAFRA), physiographic data provided by the Ontario Ministry of Northern Development and Mines, and detailed topographic data provided by Land Information Ontario.

When compiled, background information was used to create a summary of the characteristics of the subject property, in an effort to evaluate its archaeological potential. The Province of Ontario (MTC 2011; Section 1.3.1) has defined the criteria that identify archaeological potential as:

- previously identified archaeological sites;
- water sources;
 - primary water sources (e.g., lakes, rivers, streams, creeks);
 - secondary water sources (e.g., intermittent streams and creeks, springs, marshes, swamps);
 - features indicating past water sources (e.g., glacial lake shorelines, relic river or stream channels, shorelines of drained lakes or marshes, cobble beaches);
 - accessible or inaccessible shorelines (e.g., high bluffs, sandbars stretching into a marsh);
- elevated topography (e.g., eskers, drumlins, large knolls, plateau);
- pockets of well-drained sandy soils;
- distinctive land formations that might have been special or spiritual places (e.g., waterfalls, rock outcrops, caverns, mounds, promontories and their bases);



- resource areas, including:
 - food or medicinal plants (e.g., migratory routes, spawning areas, prairies);
 - scarce raw materials (e.g., quartz, copper, ochre, or chert outcrops);
 - early Settler industry (e.g., fur trade, logging, prospecting, mining);
- areas of early 19th-century settlement, including:
 - early military locations;
 - pioneer settlement (e.g., homesteads, isolated cabins, farmstead complexes);
 - wharf or dock complexes;
 - pioneer churches;
 - early cemeteries;
- early transportation routes (e.g., trails, passes, roads, railways, portage routes);
- a property listed on a municipal register, designated under the *Ontario Heritage Act*, or that is a federal, provincial, or municipal historic landmark or site; and,
- a property that local histories or informants have identified with possible archaeological sites, historical event, activities, or occupations.

In Southern Ontario (south of the Canadian Shield), any lands within 300 m of any of the features listed above are considered to have potential for the discovery of archaeological resources.

Typically, a Stage I assessment will determine potential for Indigenous and 19th-century period sites independently. This is due to the fact that lifeways varied considerably during these eras, so the criteria used to evaluate potential for each type of site also varies.

It should be noted that some factors can also negate the potential for discovery of intact archaeological deposits. The *Standards and Guidelines* (MTC 2011; Section 1.3.2) indicates that archaeological potential can be removed in instances where land has been subject to extensive and deep land alterations that have severely damaged the integrity of any archaeological resources. Major disturbances indicating removal of archaeological potential include, but are not limited to:

- quarrying;
- major landscaping involving grading below topsoil;
- building footprints; and,
- sewage and infrastructure development.

Some activities (agricultural cultivation, surface landscaping, installation of gravel trails, etc.) may result in minor alterations to the surface topsoil but do not necessarily affect or remove archaeological potential. It is not uncommon for archaeological sites, including structural foundations, subsurface features and burials, to be found intact beneath major surface features like roadways and parking lots. Archaeological potential is, therefore, not removed in cases where there is a chance of deeply buried deposits, as in a developed or urban context or floodplain where modern features or alluvial soils can effectively cap and preserve archaeological resources.



2.2 Project Context: Archaeological Context

2.2.1 Subject Property: Overview and Physical Setting

The subject property is located at 270 Queen Street South, Durham in the Municipality of West Grey, Grey County, Ontario. It is roughly 0.53 ha (1.31 ac) in size and comprises part of Lots 1 and 2 W/S Queen Street and part of Lots 1 and 2 E/S Countess Street, Registered Plan 500, Durham which are located within Lot 26, Division 3, Concession 1 West of the Garafraxa Road (WGR) in the Geographic Township of Bentinck. The subject property contains an existing residential dwelling, barn, sheds, gravel driveways, a portion of a built up pathway and lightly treed manicured lawn (Maps 1-2).

The subject property falls within the physiographic region known as the Horseshoe Moraines, as defined by Chapman and Putnam (1984:127). The region contains two landform components, the first of which consists of irregular, stony knobs and ridges composed mostly of till with some sandy and gravel deposits. The second comprises pitted sand and gravel terraces and swampy valley floors. In Grey County, the northern portion of the region incorporates tracts of shallow stony drift and scattered groups of drumlins (Chapman and Putnam 1984:127). The subject property is located in a high country region covered by a “complex of till ridges, kame moraines, outwash plains, and spillways, interspersed with more smoothly moulded till plains and drumlinized areas” (Chapman and Putnam 1984:127). Small lakes, streams and swampy areas are typical features in this part of the county, where tills are predominantly loamy with numerous stones and boulders derived from Amabel Formation dolostone (Chapman and Putnam 1984:127). Specifically, the subject property is located within a spillway associated with the Saugeen River (Map 3). This spillway is located in an area characterized by drumlinized till plains and elevated areas associated with the drumlins and the Saugeen Kames Moraine. The Saugeen River is located immediately west of the subject property (Maps 1 and 2).

The soils of the majority of the subject property are mapped as Sargent Loam, a well-drained soil developed on well sorted gravelly materials with a shallow overburden of finer materials. Sargent Loam is an intermediate between the Brown Forest and Grey-Brown Podzolic Great Soil Groups (Gillespie and Richards 1954:51). The northwestern corner end of the subject property is mapped as Bottom Land, an alluvial soil type associated with waterways. This poorly drained, dark coloured soil typically features gley subsoil (Gillespie and Richards 1954:62).

The subject property lies within the Saugeen River drainage. The course of the Saugeen River through Durham has been altered to facilitate municipal settlement. Today, the subject property is situated below Durham’s lower dam. The Saugeen Valley Conservation Authority has completed numerous works to improve the river’s channel morphology to facilitate the passage of frazil ice downstream during the winter months and spring breakup. This, along with 19th and 20th-century changes to the river’s natural course, have significantly altered the river in the vicinity of the subject property. David Gibson’s 1849 *Plan of the Town Plot of Durham Wellington District Canada West* (Map 5) shows the natural course of the Saugeen River through Durham. Small channels of the river are seen following a southwesterly course through Lot 2 E/S Countess Street. It may be that this natural channel was adapted to use as a mill race (Map 7) Gibson’s map also shows small stream which runs to the east of Queen Street before turning to pass westward through the centre of South Street and ultimately turning the southwest and existing the Durham town plot. The present day river’s flow has been consolidated below the lower dam (Maps 1 and 2).



2.2.2 Summary of Registered or Known Archaeological Sites

According to PastPortal (accessed January 29, 2024) there are no registered archaeological sites within 1 km of the subject property.

The nearest registered archaeological site to the subject property is BbHe-12, a 19th-century agricultural outbuilding located roughly 1,250 m to the northeast. This site and four others (BbHe-5, BbHe-6, BbHe-7 and BbHe-12) in its vicinity were first identified by Detritus Consulting Ltd. (Detritus) during a Stage 1-2 archaeological assessment of a property northeast of the intersection of Garafraxa Street North (Highway 6) and the Durham Road. BbHe-5 has been identified as the initial home of Archibald Hunter, the reputed first settler in the area of Durham.

At present, there are no registered Indigenous archaeological sites in the vicinity of Durham. However, the dearth of Indigenous sites is likely in part a product of the limited degree of formal archaeological surveys completed in the area. Furthermore, the urban core of Durham was built prior to the requirement to complete archaeological surveys in advance of construction.

2.2.3 Summary of Past Archaeological Investigations within 50 m

During the course of this study no record was found of any archaeological investigations within 50 m of the subject property. However, it should be noted that the MCM currently does not provide an inventory of archaeological assessments to assist in this determination.

2.2.4 Dates of Archaeological Fieldwork

The Stage 2 fieldwork was conducted on April 8th, 2024, in sunny and warm weather conditions the direction of Sean Graziano, BA (R1354).



2.3 Project Context: Historical Context

2.3.1 Indigenous Settlement in Grey County

Our archaeological knowledge of past Indigenous habitation and land use in this portion of Grey County is limited, largely due to a paucity of cultural resource management and research based archaeological assessments. Using existing data and regional syntheses, it is possible to propose a generalized model of Indigenous settlement in Grey County. The general themes, time periods and cultural traditions of Indigenous settlement, based on archaeological evidence, are provided below and in Table 1.

Table 1: Chronology of Indigenous Settlement in Grey County

Period	Time Range	Diagnostic Features	Archaeological Complexes
Early Paleo	9000-8400 BCE	fluted projectile points	Gainey, Barnes, Crowfield
Late Paleo	8400-8000 BCE	non-fluted and lanceolate points	Holcombe, Hi-Lo, Lanceolate
Early Archaic	8000-6000 BCE	serrated, notched, bifurcate base points	Nettling
Middle Archaic	6000-2500 BCE	stemmed, side & corner notched points	Brewerton, Otter Creek, Stanly/Neville
Late Archaic	2000-1800 BCE	narrow points	Lamoka
Late Archaic	1800-1500 BCE	broad points	Genesee, Adder Orchard, Perkiomen
Late Archaic	1500-1100 BCE	small points	Crawford Knoll
Terminal Archaic	1100-950 BCE	first true cemeteries	Hind
Early Woodland	950-400 BCE	expanding stemmed points, Vinette pottery	Meadowood
Middle Woodland	400 BCE-500 CE	dentate, pseudo-scallop pottery	Saugeen
Transitional Woodland	500-900 CE	first corn, cord-wrapped stick pottery	Princess Point
Late Woodland	900-1300 CE	first villages, corn horticulture, longhouses	Glen Meyer, Pickering
Late Woodland	1300-1400 CE	large villages and houses	Uren, Middleport, Lalonde
Late Woodland	1400-1650 CE	tribal emergence, territoriality	
Contact Period - Indigenous	1700 CE-present	treaties, mixture of Indigenous & European items	
Contact Period - Settler	1796 CE-present	industrial goods, homesteads	pioneer life, municipal settlement



2.3.1.1 Paleo Period

The first inhabitants of Grey County lived in small, mobile bands that moved across the landscape in pursuit of the large migratory game, particularly caribou that were the staple of their subsistence. Ontario at the time still experienced a cold and harsh climate, with open spruce woodland dominating between 12,500 and 10,000 years ago and tundra conditions between 11,200 – 10,300 years old. Between 11,000 and 10,400 years before present, the Niagara Escarpment was one of the few areas in the region not submerged beneath pro-glacial Lake Algonquin (Cowan and Sharpe 2007:20). The Paleo period is divided into two basic timeframes, distinguished by styles of chipped stone arrowheads or projectile points. The Early Paleo period (9000-8400 BCE) is associated archaeologically with carefully crafted leaf-shaped points or spear heads, donned with long narrow channels or flutes that along the central axis of the point perpendicular to the base. These large points are better known further south in Ontario, although finds have also been made in Grey County and many occur on Fossil Hill chert which outcrops on the Escarpment near Blue Mountain. The archaeological hallmark of the Late Paleo period (8400-8000 BCE) are smaller lanceolate spear points that, while still finely made, do not exhibit the characteristic flutes of earlier times and often occur on different raw materials, including quartzite from Sheguiandah on Manitoulin Island.

In general, documented Paleo sites in Ontario are rare, small and ephemeral. Given their considerable age, organic materials rarely survive and hence, archaeologically, they are known primarily from stone tools, including the spear tips identified above, alongside scraping, cutting, splitting and crushing tools used to manipulate plant and animal raw materials used for food, clothing, shelter and other necessities of life. Quite often they are associated with former glacial shorelines, which were the focus of caribou migratory routes.

2.3.1.2 Archaic Period

The Archaic period is a long, broadly defined period that encompasses long trajectories of subsistence and technological changes, in part as a continuing adaptation to climate and vegetation changes. The period essentially spans a long period of time between the post-glacial Paleo Period characterized by primarily big game hunters and the Woodland Period, associated with emergent horticulture, the introduction of longer-term settlements and pottery technology. Archaeologists generally recognize three major temporal divisions within the Archaic Period – Early (ca. 8000-6000 BCE), Middle (6000-2500 BCE) and Late (2500-950 BCE) – generally defined by distinctive projectile point styles and other unique stone tool categories.

The Early Archaic period witnessed warming temperatures and fluctuating lake levels. By about 9500 BP there was a shift from the primarily coniferous forests of early times to mixed forest conditions that were favourable for deer, elk and moose. Early Archaic populations continued the mobile lifestyle of their predecessors and had a more varied diet exploiting a larger range of plant, bird, mammal and fish species. A seasonal pattern of warm-season riverine or lakeshore settlements and interior cold-weather occupations has been documented in the archaeological record. Early Archaic sites are also quite rare on the landscape, with many potentially submerged as water levels rose to those of modern-day Lake Huron. As groups continued to live a mobile lifestyle, Early Archaic sites are often small and consist largely of stone tools and stone manufacturing waste. Several distinctive projectile point styles are associated with the Early Archaic Period and can be associated with heavy, roughly-flaked woodworking chopper/scrapers, ground axe-like celts and ground and polished slate tubes that may have served as atlatl (dart/spear-thrower) weights.

Throughout Ontario generally sites dating to the Middle Archaic are more commonly encountered, partially a reflection of great population density during this time and patterns of more regular and intensive utilization and occupation of resource-rich zones, albeit still on a seasonal basis. In Grey County, Middle Archaic sites are



still relatively rare, partially due to the limited archaeological investigation that has occurred within its bounds but also due to the fact that continued fluctuating lake levels contributed to many sites being inundated.

By 7,000 to 6,000 years ago, mixed coniferous-deciduous forests were prevalent and bore significant nut-producing species (oak, walnut, butternut, hickory and beech) that attracted wapiti (elk) and white-tailed deer populations. Archaeological evidence also suggests that Middle Archaic populations were both hunters and fishers, indicated by the recovery of fishing apparatus, such as cobble netsinkers, and regular occurrence of sites along waterways, especially adjacent to rapids, many of which are still popular fishing spots today.

The artifacts relating to or diagnostic of the Middle Archaic are more diverse than those from earlier times, with significant variability over the period's lengthy duration. Many of the earliest Middle Archaic projectile points are side-notched pieces or stemmed variations of earlier bifurcate base points with serrated edges from extensive resharpening. Corner- and side-notched spear points continued in use through the Middle Archaic period. Formal ground and polished stone tools are more common by this time, including axes, "bannerstones" (possibly weights for atlatls or spear-throwers, or for use as ornamental or ceremonial objects). In general, the diversity of artifacts is reflective of a wider range of activities, subsistence and otherwise, including hunting, fishing, wood and bone working, hide processing and so on. While it is not immediately evident archaeologically that watercraft were made and used during this time, it is possible.

In the western Great Lakes, some Middle Archaic sites have produced items of local source copper or "native copper," as described by archaeologists to distinguish Canadian Shield derived material from that brought to North America by European explorers thousands of years later. Indigenous populations modified naturally occurring or mined copper nuggets through cold hammering and annealing into a variety of tools – projectile points, hooks, adzes and ornamental items. These, alongside copper raw materials, were traded throughout the Upper Great Lakes. Occasionally native copper artifacts are found at significant distances from sources around Lake Superior, suggesting an extensive and wide-reaching trading network existed by this time that encompassed lands within what is now Grey County.

Late Archaic period sites are far more plentiful in Grey County, partially a reflection of the fact that these sites were never inundated as essentially modern lake levels were achieved by that time. In addition, climate and environmental conditions mimicked those of modern day. Two notable developments occurred during this period. The first is the invention of the bow and arrow, thought to be reflected in the manufacture of much smaller projectile points for arrow tips. The second is the elaboration of mortuary traditions, as reflected in the documentation of Indigenous burials with highly elaborate grave goods that include ritual, ornamental and utilitarian items of local and non-local origin (e.g., native copper items, marine shell, unworked galena cubes and powdered red ochre). While archaeologists interpret these highly elaborate burials (referred to as "Glacial Kame" for their occurrence in glacial landforms of the same name) as the first formal Indigenous cemeteries, it should be noted that evidence from earlier burials is absent largely due to environmental conditions that inhibited preservation over longer time periods.

2.3.1.3 Early, Middle and Transitional Woodland Periods

Three hallmarks characterize the Woodland period: the appearance of earthenware pottery in the Great Lakes area around 800 BCE, the development of the practice of agriculture and the emergence of populations subsiding primarily on crop staples corn, beans and squash, and the appearance of major longer-term settlements. Whereas earlier populations practiced a settlement system comprised of seasonal movements to camps, activity areas and resource zones on a seasonal and semi-seasonal basis (a cycle that continued into modern times for some Indigenous groups), some Woodland period peoples lived in larger villages that were



moved only when local resources were depleted. Archaeologists recognize three very wide-sweeping time divisions in the Woodland period reflecting considerable change in tools, technology and settlement-subsistence practices: Early (ca. ca. 800 to 400 BCE), Middle (ca. 400 BCE to 700 CE), and Late (ca. 900 to 1650+ CE).

The Early Woodland is defined in Grey County by sites attributed to what archaeologists call the Meadowood cultural complex (2800 to 2400 BP), associated with the oldest style of pottery known in Ontario - Vinette I, thick- and straight-sided pots with tapering bottoms and cord- or fabric-roughened surfaces and lacking formal decoration. This pottery is similar to that manufactured around the same time by populations in Michigan and Ohio. Triangular preforms or tool blanks are also characteristic of Meadowood and exhibit considerable technical skill and craftsmanship. That these are found in large caches in proximity to primary chert outcrops suggests they were potentially mass produced, utilized in systems of widespread exchange throughout the Great Lakes and transformed into various tool forms like projectile points, hide scrapers and drills. Other Early Woodland projectile point types, like Turkey-tail and Adena Stemmed, show equal technical prowess in their execution and tie into widespread trade networks extending into Ohio. The Early Woodland archaeological cultures of Ontario continue the mortuary traditions of Late Archaic times and show connections to the elaborate ceremonial traditions of the Adena mortuary complex of the central Ohio Valley that included geometric and animal-form earthworks and burial mounds. The first evidence of domesticated plants (gourds, pumpkins, squash and sunflowers) also occurs in the Early Woodland.

The Middle Woodland period is associated with pottery vessels with more outflaring rims and exterior surfaces decorated with bands of stamped motifs made by impressing the edge of a scallop shell (or similar looking tool) (i.e., pseudo-scallop shell) or toothed comb (dentate stamp), with the former more common in the later part of the period. Regional differences are notable across Ontario during the Middle Woodland, with the manifestation between the Bruce Peninsula and the Niagara Peninsula identified as "Saugeen," named for signature sites identified along the Saugeen River, some of which are burials. The latter suggest an association with the ca. 200 BCE to 500 CE Hopewell culture in southern and central Ohio associated with impressive burial mounds and earthworks, highly elaborate stone tool technologies and extensive, almost pan-American exchange networks indicated by the occurrence of non-local objects from thousands of miles distant.

Middle Woodland sites are larger and more frequent than Early Woodland sites in Ontario, likely due to population growth resulting from more intensive exploitation of fish. The distribution of Middle Woodland sites across Ontario suggests a shift from the Late Archaic-Early Woodland settlement pattern of larger band sizes in winter combined with summer dispersal into smaller groups to one of summer aggregations of large groups of people in highly accessible riverine areas with resource abundance (e.g., river rapids, river/stream mouths where spear fishing produced a rich subsistence base) and winter dispersal to smaller nuclear and extended family or small band camps. During the late summer and fall, extended families dispersed to shallow bays to net fall-spawning fish (i.e., whitefish, lake herring/cisco, and lake trout) and into the interior to harvest wild rice. Dispersal into small, mobile extended-family groups during periods of reduced food availability continued during the late fall and winter with the trapping and hunting of fur-bearing mammals being pursued from small, sheltered camps scattered throughout the interior.

By the end of the late Middle Woodland period and into the early part of the Late Woodland pottery vessels emerged with more globular forms with rounded bases and heavily cord- or fabric-roughened exteriors with decoration created through impressing the ends of small circular tools (punctates) along the neck and twisted cords, cord-wrapped sticks and other cord-wrapped implements along the rim. Projectile points fashioned



from pentagonal blanks as well as triangular forms also define this transition between Middle and Late Woodland.

2.3.1.4 Late Woodland Period

During the Late Woodland period a warming trend between ca. 900 to 1250 CE allowed for a more intensive pursuit of corn agriculture and its expansion to even marginal locales. Conditions were conducive for agriculture in areas around the mouths of the Beaver and Bighead valleys at the head of Georgian Bay. By providing a plentiful and storable, year-round food source, corn agriculture permitted the longer-term settlement of locales, resulting in the creation of large village sites comprised of multiple extended families. A cooling trend between ca. 1430 and 1850 CE encouraged a shorter growing season and full-scale adoption of agriculture by Grey County Indigenous populations during this period.

The Late Woodland period in Grey County is still poorly understood, primarily because the archaeological record has been traditionally interpreted using biases from other parts of Ontario where it is both better known from a larger sample of archaeological sites and associated with historically documented Iroquoian groups like the Tionnontate (or Petun) near Blue Mountain, Huron-Wendat in primarily Simcoe County and Attawandaron or Neutral in southwestern Ontario, and their ancestral populations.

Although there is regional diversity and significant variability in settlement patterns and both tool and pottery technologies throughout the Late Woodland period that are too numerous to describe here, Late Woodland archaeological sites are identified by the presence of high quality, thin-walled pottery with intricate impressed and incised decoration, small triangular or side-notched triangular projectile points, animal bone tools and ornaments, clay and stone smoking pipes, polished and ground stone implements, extensive assemblages of animal and fish bone and occasionally preserved botanical remains such as seeds or kernels of corn, beans, squash, tobacco and medicinal plants. Late Woodland site types include palisaded villages (which grow from early settlements of one or two houses to assemblies of twenty or more), cabin and special-purpose sites, camps, burials and ossuaries (i.e., large multiple burial pits), although the latter have not yet been documented in Grey County.

Late Woodland period habitation, resource-procurement, ritual, and burial sites are noticeably more frequent and widespread across the Bruce Peninsula and adjacent areas. As they can often reflect larger and longer-occupied sites, they tend to be more visible archaeologically.

Beginning in the late-16th century, Late Woodland period sites are also characterized by the occurrence of items of European manufacture or fashioned from them. These include various varieties of glass beads, whole copper/brass kettles and fragments thereof, glass and ceramic containers and iron tools, namely axes, awls, knives and other implements. While the earliest items were likely brought into Grey County by individuals who had encountered or were accompanied by European explorers and missionaries, later items are a product of a systematic trade network that developed in response to French, English and Dutch interests in beaver pelts. Extensive written documents exist for the arrival of Europeans to North America, including some that speak specifically about Indigenous populations who inhabited Grey County in the Late Woodland. However, these records were made by explorers and missionaries with a purpose of reporting back to their superiors in Europe and are both incomplete and culturally biased. Nonetheless they provide useful baseline information for understanding Indigenous life in the late-16th through mid-to-late 17th centuries that can be combined with archaeological evidence and oral histories to generate a richer and more fulsome picture of the period.



2.3.1.5 Post Contact Indigenous Settlement

At the time of European contact in the early 17th century, the Iroquoian speaking Tionontatehronnon (Petun) peoples lived along the southern shore of Nattawasaga Bay. Their nine villages were nestled along the base of the Niagara Escarpment and inland from Georgian Bay, providing exceptional growing conditions for tobacco (Garrad and Heidenreich 1978; Heidenriech 1971; Tooker 1964). First named the Petun by French explorer Samuel de Champlain when he visited their homeland in 1616, other contact between the French and Tionontatehronnon was limited until about 1640 (Garrad and Heidenriech 1978).

The Tionontatehronnon maintained a close relationship with the Algonquin speaking Odawa groups of the Bruce and Georgian Bay area to the north and west, and an allied position with the Wendat groups to the east (Fox 1990:461; Garrad and Heidenriech 1978; Heidenriech 1971; Tooker 1964). Both the Tionontatehronnon and the Wendat had been part of a general migration from south to north in Ontario, however at the time of contact, the Tionontatehronnon were consolidating the majority of settlement areas in the north. As Europeans arrived in the area, the Wendat soon dominated trade with the newcomers and limited contact between the western Tionontatehronnon and French until the early 1640s (Garrad and Heidenriech 1978; Heidenriech 1971; Tooker 1964). The Wendat would maintain a dominant role in the fur trade, but the Tionontatehronnon remained the primary source of tobacco for the Wendat (Garrad and Heidenriech 1978; Heidenriech 1971; Tooker 1964). By 1641, two Jesuit missions were established within the Tionontatehronnon nation, including one at Ehwae and later Etharita in the south (ca. 1641) and another at Ekarenniondi in the north (ca. 1640). At the time of contact the Tionontatehronnon had a population of roughly 8,000 people, however due to disease, the population diminished by 50-70% by 1640 (Garrad and Heidenriech 1978; Heidenriech 1971; Tooker 1964). French observers noted the presence of both the Odawa and Neutrals in Tionontatehronnon villages, likely a result of those seeking relief from famine, warfare, or as a result of over-wintering (Garrad and Heidenriech 1978; Heidenriech 1971; Tooker 1964).

Around 1650, much of the Tionontatehronnon homeland was destroyed due to rising hostilities between the Haudenosaunee in the south and the Wendat in the east (Garrad and Heidenriech 1978; Heidenriech 1971; Tooker 1964). As a result, the Tionontatehronnon people, along with the Wendat refugees, fled to more northerly regions of the Great Lakes, including some that settled in what is now Grey County.



2.3.2 Treaty History

The subject property is encompassed by Saugeen Tract Purchase, or Treaty 45 ½ that was signed between the Crown and Anishinaabe peoples on August 9, 1836 in Manitowaning (Ministry of Indigenous Affairs, 2022). The treaty was negotiated between the SON and the Crown to open 1.5 million acres for settlement, in return for assistance and the protection of the Indigenous Peoples who continued to live on the Saugeen Peninsula (Duern, 2017; SON, 2021). These lands became known as the “Queens Bush”.

The conditions of Treaty 45 ½ were not upheld by the British Crown, who claimed that the Saugeen (Bruce) Peninsula could not be protected without the negotiation of a second treaty. Settlers were moving farther north into the Peninsula, and it was the aim of the Canadian Government to settle the opposing side of Lake Huron to match the settlement of those in the United States (Surtees 1984: 101-102). The terms of the new treaty were negotiated with each sitting Chief separately, and pressure was exerted on all signatories to cede more territory under the promise of protection of territory, and financial benefits (Surtees 1984: 104-105). This became Treaty 72, which was signed on October 13, 1854 and ceded approximately 500, 000 acres of the Saugeen (Bruce) Peninsula to the British Crown (Duern, 2017: Ministry of Indigenous Affairs, 2022).

In 2019, the SON filed claims with the Canadian and Ontario government regarding the waters in Lake Huron and Georgian Bay, and a claim seeking redress from Treaty 72 in which the SON was forced to cede lands to the British Crown, after being assured under Treaty 45 ½ that their lands on the Saugeen (Bruce) Peninsula would be protected from settler encroachment (OKT 2021). Phase I of the claim has concluded, with the Ontario Superior Court denying Aboriginal Title to the claimed waters in Lake Huron and Georgian Bay, but did agree that the Crown broke its treaty promise as outlined in Treaty 45 ½. Phase II of the trial is still ongoing (OKT 2021).



2.3.3 Nineteenth-Century and Municipal Settlement

The subject property is located at 270 Queen Street South, Durham in the Municipality of West Grey, Grey County, Ontario. It comprises part of Lots 1 and 2 W/S Queen Street and part of Lots 1 and 2 E/S Countess Street, Registered Plan 500, Durham which are located within Lot 26, Division 3, Concession 1 WGR in the Geographic Township of Bentinck. A brief discussion of 19th-century settlement and land use in the county, township and Durham is provided below in an effort to identify features signaling archaeological potential.

2.3.3.1 Grey County

Early township surveys in Grey County were brought about as a result of a need for land following the American War of Independence (Marsh 1931:38). The Government of Upper Canada had instructed surveyor Charles Rankin in 1837 (first survey), followed by John McDonald from 1840-1841 (second survey), to lay out a tier of 50 acre lots on each side of a colonization road through the “Queen’s Bush” (Marsh 1931:163; Brown 1932:27). Garafraxa Road was established, beginning near Fergus and extending north to Owen Sound.

Settlement in the area which would become Grey County began in the 1830s when the eastern portion was part of the York District. By the 1837 rebellion, settlement in Collingwood and St. Vincent townships was extensive enough for each township to send a number of militia volunteers to support the loyalists (H. Belden & Co. 1880). By the end of 1841 much of the surveyed land was taken up by United Empire Loyalists or military men on the free grant system; however, few actual settlers came to the area (Davidson 1972:38; Marsh 1931:236). Absentee ownership was a major issue. Very few grantees ever settled on their estates and much of this land fell in the hands of speculators who were holding large areas of land in the hope of eventual big profit (Davidson 1972:34; Marsh 1932:38). Though lots were not opened for sale by the Government until 1856, a number of settlers had squatted on the land long before.

The first settler in what would become Grey County was the government surveyor Charles Rankin who surveyed the townships of St. Vincent and Collingwood in 1833 (H. Belden & Co. 1880). Rankin built a log house on a sheltered bay west of what is now the town of Thornbury at a place that came to be known as Rankin’s Landing (Marsh 1931:40). Richard McGuire, an Irishman, arrived at Rankin’s landing in November 1834 and set up a farm nearby with his family. His son, Charles, born in 1837 was the first settler born in the County (Marsh 1931:41).

In 1842, the territory now comprising Grey County was split with the western half included in Wellington County within the District of Waterloo and the eastern half within the County of Simcoe. Named after Charles, the second Earl of Grey, the County of Grey became a provisional county in 1852 (H. Belden & Co. 1880). The Provisional Council of Grey County held its inaugural meeting in the Town of Sydenham (now Owen Sound) on April 15, 1852 and gained independent municipal status in 1854.

In the 1840s, the northern portion of Grey County enticed Black citizen and fugitive slave to establish communities in the County (McMullen 2021) and numbers increased dramatically following the passing of the Fugitive Slave Act in the United States in 1850 (Norquay and Garramone 2016:21). The village of Priceville in southern Grey County was one of the early Black settlements; however European immigrants in the 1850s often forced older residents out. Some of the Black settlers along Negro Creek may have arrived shortly after the War of 1812, before local Indigenous people had negotiated a treaty to surrender the land. By 1851, some 50 Black families were living in the Negro Creek District (McMullen 2021).



2.3.3.2 Township of Bentinck

The survey of Bentinck Township was under way in 1839 when the focus was on the creation of the Garafraxa Road and opening up the Queen's Bush for settlement. The eastern portion of Bentinck is one of the oldest sections in the Township and one of the earliest settlement areas in all of Grey County (Davidson 1972:69; Marsh 1931:170). In the spring of 1840, Jim Mountain and Aaron Vollett trudged along the newly surveyed Garafraxa Road, settling on land two miles west of the Town of Durham (Davidson 1972:69). It was not until 1845 that the two men were joined by Charles and John Hopkins. These gentlemen were shortly followed by a number of settlers who together formed the small community of what would become known as Hutton's Hill (Davidson 1972:69). The Durham Road, a major colonization road crossing the township, was surveyed in 1848. Many of the earliest settlers sought out the best land and milling sites along the thoroughfare and near to the Saugeen River. By 1861, the population of Bentinck Township was 3,331 (Marsh 1931:171).

2.3.3.3 Town of Durham

The Town of Durham, initially known as Bentinck, was first settled by Archibald Hunter in 1842 (Davidson 1972:69). Upon the advice of a surveyor, Hunter travelled north on Garafraxa Road from Fergus, Ontario with some companions and the goal of settling on the lands immediately north of the Saugeen River. They spent their first night in what would become the Town of Durham in an abandoned wigwam that stood at the top of the hill adjacent to the river, close to the site of the future Anglican Church (Old Home Week Association 1935:5). Hunter built a log home along the thoroughfare in the northern section of the town and regularly opened his home to travellers looking to locate on the free grants along the Garafraxa Road (Davidson 1972:81; Marsh 1931:181). Hunter was closely followed by John Davidson who took up land nearby. He married Hunter's daughter Elizabeth and their son, Archibald Davidson, was the first European born child in Bentinck Township (Davidson 1972:82; Marsh 1931:171,181).

Aside from Hunter's informal lodging at his home, the first enterprise to be formed in Durham was a mill. The Edge Mills were established in 1847, relieving local farmers of the need to travel long distances to Guelph, Fergus, or Owen Sound to process their grist (Marsh 1931:182). In 1848, the Crown Lands Office was relocated from Owen Sound to the village of Bentinck under the charge of newly appointed Government Agent George Jackson, who changed the name to Durham, and Durham Road was surveyed (Marsh 1931:171; Old Home Week Association 1935:7). Hunter later built a hotel known as the British Hotel in 1854 and erected an adjoining store the following year (Marsh 1931:183).

Durham's population increased dramatically throughout the 1850s, reaching 850 by 1864. A lack of nearby trade rivals was appealing to settlers and businesses in the town consequently flourished (Old Home Week Association 1935:7). By this time, the town boasted two saw mills, two grist mills, fulling, pressing and carding factories, a foundry, a tannery, a brewery, a brick yard, blacksmiths, coopers, harness shops, tailors, carpenters, lawyers, two schools, a bank, a print shop, a milliner, five hotels, five churches, a silver and goldsmith, doctors, and general stores (DHC 1994:9). In 1872, Durham was incorporated as a Town by Parliament (Marsh 1931:184).



2.3.4 Review of Historic Maps

David Gibson's 1849 *Plan of the Town Plot of Durham Wellington District Canada West* (Map 5) shows the survey of the original town plot of Durham, some environmental conditions and the location of select early structures. Though the subject property is not shown to contain any structures, some important environment conditions are depicted on this map. This map depicts the Saugeen River before its path through Durham had been consolidated. Small channels of the river are seen following a southwesterly course through Lot 2 E/S Countess Street. Similarly, a small stream is seen to the east of Queen Street before turning to pass westward through the centre of South Street and ultimately turning the southwest and existing the Durham town plot. David Gibson's survey field notebook (Gibson 1848: 16) describes the land west of Lots 1 and 2 E/S Countess Street as cedar and elm flats with occasional stands of ash cut by small channels of the Saugeen River ranging from 0.2 to 0.15 chains (approx. 4.02 to 3.02 m) in width. The land immediately to the east of Lots 1 and 2 W/S Queen Street is described as level land treed by maple, beach, elm and hemlock (Gibson 1848: 13). Gibson did not make mention of any signs of Indigenous occupation.

The *Township of Bentinck* map in H. Belden & Co.'s 1880 *Illustrated Atlas of the County of Grey* (Map 6) provides as high level view of Durham. No detailed map of Durham is provided in the atlas. Plan 500, Lots 1 and 2 W/S Queen Street and Lots 1 and 2 E/S Countess Street are shown an undifferentiated townplot. No specific structures are shown in the vicinity. The Georgian Bay and Wellington Railway is seen passing to the west of the subject property. South, Countess, Sadler and Queen Streets are all visible on this map. A small channel of the Saugeen River appears to pass through the western end of the subject property.

A 1945 topographic map (Map 7) shows the subject property as occupied land at the southcentral portion of Durham. The property contains a structure, likely a residence, fronting Queen Street and a second structure in the interior of the lot. This second structure may be a garage or outbuilding. At this time the Saugeen River is dammed just above the its intersection with Sadler Street. A mill race runs through the western end of the subject property. A drain passes along the southern limit of the subject property. This drain is a modified natural watercourse.

Unfortunately the 1954 aerial photograph (Map 8) is not of sufficient resolution to provide a detailed view of the subject property. The two structures shown on the 1945 topographic map (Map 7) cannot clearly be discerned here. The eastern end of the property appears to be treed while the central portion has been cleared. The western end of the property is more heavily vegetated and appears to be wooded.

2.3.5 Review of Heritage Properties

There are no designated heritage properties or plaques within 50 m of the subject property.



2.4 Analysis and Conclusions

As noted in Section 2.1, the Province of Ontario has identified numerous factors that signal the potential of a property to contain archaeological resources. Based on the archaeological and historical context reviewed above, the subject property is in proximity (i.e., within 300 m) to features that signal archaeological potential, namely:

- mapped 19th-century thoroughfares (South Street, Countess Street, Sadler Street and Queen Street);
- areas of 19th-century settlement (Durham); and,
- a source of potable water (Saugeen River).

2.5 Recommendations

Given that the subject property demonstrated potential for the discovery of archaeological resources, a Stage 2 archaeological assessment was recommended. In keeping with provincial standards, the areas within the subject property that consist of grassed or treed areas are recommended for assessment by a test pit survey at a 5 m transect interval to achieve the provincial standard. As the subject property is considered to have archaeological potential pending Stage 2 field inspection, a separate map detailing zones of archaeological potential is not provided herein (MTC 2011; Section 7.7.4, Standard 1 and Section 7.7.6, Standards 1 and 2).

3 STAGE 2 ARCHAEOLOGICAL ASSESSMENT

3.1 Field Methods

All fieldwork was undertaken in good weather and lighting conditions. No conditions were encountered that would hinder the identification or recovery of artifacts. The property boundaries were determined in the field based on proponent mapping, landscape features, property fencing, and GPS co-ordinates.

The subject property is comprised primarily of non-ploughable lands (lightly treed manicured lawn) and as such, was subject to a standard test pit assessment, employing a 5 m transect interval (84.9%; 0.45 ha; Images 1-3). Test pits measuring at least 30 cm (shovel-width) were excavated through the first 5 cm of subsoil with all fill screened through 6 mm hardware cloth. Once screening was finished, the stratigraphy in the test pits was examined and then the pits were backfilled as best as possible, tamped down by foot and shovel and re-capped with sod. Test pitting extended up to 1 m from all standing features, including trees and buildings, when present. It was anticipated that when cultural material was found, the test pit survey would be intensified (reduced to 2.5 m) to determine the size of the site. If not enough archaeological materials were recovered from the intensification test pits, a 1 m² test unit would be excavated atop of one of the positive test pits to gather additional information.

The test pits in the lawn to the rear of the dwelling and within the treed area contained roughly 40 cm of brown sandy loam soil over orange-light brown sand subsoil (Images 4 and 5). The test pits in the lawn to the rear of the barn contained roughly 50 cm of brown sandy loam soil with limestone cobbles over orange-light brown sand subsoil (Image 6). These test pits are all understood to be largely representative of an intact soil profile. A test pit in the vicinity of the dwelling was found to contain 10 cm of brown sandy loam soil over 5 cm of red brick and mortar construction debris mixed with brown sandy loam over 30 cm of brown sandy loam over orange-light brown sand subsoil (Image 7). This test pit and the others like seem to provide evidence of a demolition event on the property where demolition debris and displaced topsoil were spread over the surrounding area capping the typical soil stratigraphy.

As per Section 2.1, Standard 2 of the *Standards and Guidelines* (MTC 2011:28-29), certain physical features and deep land alterations are considered as having low archaeological potential and are thus exempt from the standard test pit survey. Approximately 15.1% (0.08 ha) of the subject property was disturbed, consisting of the existing residential dwelling, barn, sheds, gravel driveways and the portion of a built up pathway existing structure, a garage and driveway (Images 8-10).

Map 9 illustrates the Stage 2 field conditions and assessment methods; the location and orientation of all photographs appearing in this report are also shown on this map. Map 10 presents the Stage 2 results on the proponent mapping. An unaltered proponent map is provided as Map 11.



3.2 Record of Finds

No archaeological materials or sites were identified during the Stage 2 archaeological assessment of the subject property. Table 2 provides an inventory of the documentary records generated during this project.

All files are currently being stored at the TMHC corporate office located at 1108 Dundas Street, Unit 105, London, ON, N5W 3A7.

Table 2: Documentary Records

Date	Field Notes	Field Maps	Digital Images
April 8, 2024	Digital and hard copies	Digital and hard copies	35 Images

3.3 Analysis and Conclusions

A Stage 2 field assessment was conducted in keeping with the MCM’s *Standards and Guidelines* (MTC 2011). The test pit survey did not result in the documentation of archaeological resources. As such, the subject property should be considered free of archaeological concern.

3.4 Recommendations

All work met provincial standards and no archaeological material was documented during the assessment. As such, the subject property should be considered free of archaeological concern and no further archaeological assessment is recommended.

Our recommendations are subject to the conditions laid out in Section 5.0 of this report and to the MCM’s review and acceptance of this report into the provincial registry.



4 SUMMARY

A Stage 1 and 2 archaeological assessment was conducted to permit the proposed redevelopment of 270 Queen Street South, Durham in the Municipality of West Grey, Grey County, Ontario. The subject property is roughly 0.53 ha (1.31 ac) in size and comprises part of Lots 1 and 2 W/S Queen Street and part of Lots 1 and 2 E/S Countess Street, Registered Plan 500, Durham which are located within Lot 26, Division 3, Concession 1 West of the Garafraxa Road (WGR) in the Geographic Township of Bentinck. The Stage 1 assessment revealed that the property had potential for the discovery of archaeological resources and a Stage 2 survey was recommended and carried out. The Stage 2 assessment (test pit assessment at a 5 m interval) did not result in the documentation of archaeological resources. As such, the subject property should be considered free of archaeological concern and no further archaeological assessment is recommended.



5 ADVICE ON COMPLIANCE WITH LEGISLATION

This report is submitted to the MCM as a condition of licensing in accordance with Part VI of the *Ontario Heritage Act*, R.S.O 1990, c 0.18. The report is reviewed to ensure that it complies with the standards and guidelines that are issued by the minister, and that the archaeological fieldwork and report recommendations ensure the conservation, protection and preservation of the cultural heritage of Ontario. When all matters relating to archaeological sites within the project area of a development proposal have been addressed to the satisfaction of the MCM, a letter will be issued by the ministry stating that there are no further concerns with regard to alterations to archaeological sites by the proposed development.

It is an offence under Sections 48 and 69 of the *Ontario Heritage Act* for any party other than a licensed archaeologist to make any alteration to a known archaeological site or to remove any artifact or other physical evidence of past human use or activity from the site, until such time as a licensed archaeologist has completed archaeological fieldwork on the site, submitted a report to the minister stating that the site has no further cultural heritage value or interest, and the report has been filed in the Ontario Public Register of Archaeology Reports referred to in Section 65.1 of the *Ontario Heritage Act*.

Should previously undocumented (i.e., unknown or deeply buried) archaeological resources be discovered, they may be a new archaeological site and therefore subject to Section 48(1) of the *Ontario Heritage Act*. The proponent or person discovering the archaeological resources must cease alteration of the site immediately and engage a licensed consultant archaeologist to carry out archaeological fieldwork, in compliance with Section 48(1) of the *Ontario Heritage Act*.

The *Funeral, Burial and Cremation Services Act*, 2002, S.O. 2002, c.33 requires that any person discovering human remains must notify the police or coroner and Ian Hember, Registrar of Burial Sites, Ontario Ministry of Public and Business Service Delivery. His telephone number is 416-212-7499 and e-mail address is Ian.Hember@ontario.ca.



6 BIBLIOGRAPHY

Chapman, L.J. and D.F. Putnam

1984 *The Physiography of Southern Ontario*. Two Volumes. Third Edition. Ontario Geological Survey. Toronto: Ontario Ministry of Natural Resources.

2007 *Physiography of Southern Ontario, Ontario Geological Survey, Ministry of Northern Development and Mines, Miscellaneous Release-Data 228*.

Cowan, W.R. and D.T. Sharpe

2007 *Surficial Geology of the Bruce Peninsula, Southern Ontario. Ontario Geological Survey Open File Report 6211*.

County of Grey Orthophotography

2015 *Grey County Aerial Photographs*. Online Mapping Application. [Website Link](#). Accessed January 4, 2024.

Davidson, T.A.

1972 *A New History of the County of Grey and the Many Communities Within Its Boundaries and the City of Owen Sound*. Owen Sound: The Grey County Historical Society.

Department of National Defence

1945 *Durham, Ontario*. 1:63,360 Scale Topographic Map. Durham Sheet, No. 41 A/2

Durham Historical Committee (DHC)

1994 *A History of the Town of Durham, 1842 to 1994*. T. Firth, B. Corbett, B. Pust and V. Firth Editors. Durham, Ontario: Durham Historical Committee.

Duern, Liz

2017 *Treaties and Huron County*. [Website Link](#). Accessed December 15, 2022.

Fox, W.

1990 *The Odawa*. In *The Archaeology of Southern Ontario to AD 1650*. N. Ferris and C. Ellis eds., pp. 457-473. Occasional Paper No. 5 of the London Chapter Ontario Archaeological Society.

Garrad, C. and C. Heidenreich

1978 *Khionontateronon (Petun)*. In *Handbook of North American Indians*, vol. 15: Northeast. Edited by Bruce Trigger: Washington DC.

Gibson, D.

1848 *Field Note Book 181*. Peterborough, Ont.: Office of the Surveyor General.

1849 *Plan of the Town Plot of Durham Wellington District Canada West*. Peterborough, Ont.: Office of the Surveyor General.



Gillespie, J.E. and N.R. Richards

1954 *Soil Survey of Grey County*. Report No. 17 of the Ontario Soil Survey. Guelph: Experimental Farms Service, Canada Department of Agriculture and the Ontario Agricultural College.

Government of Ontario

1990 *Planning Act, R.S.O. 1990*. (c. P.13). Queen's Printer for Ontario. [Website Link](#). Accessed April 7, 2022.

1990 *Ontario Heritage Act, R.S.O. 1990*. (c. 0.18). Queen's Printer for Ontario. [Website Link](#). Accessed February 16, 2021.

H. Belden & Co.

1880 *Grey Supplement. Illustrated Atlas of the Dominion of Canada*. In Cummings, R. (ed) *Illustrated Atlas of the Counties of Grey & Bruce, Ontario*. Reprint, Port Elgin: Cummings Atlas Reprints, 1975.

Heidenreich, C.

1971 *Huronian: A history and geography of the Huron Indians 1600-1650*. Toronto: McClelland and Stewart.

Marsh, E.L.

1931 *A History of the County of Grey*. Owen Sound: Fleming Publishing Company Limited

McMullen

2021 *Black History in Grey County*. Grey Root Museum and Archives. [Website Link](#). Accessed December 15, 2022

Microsoft

2019 *Computer generated building footprints for Canada, Microsoft Open Source*. [Website Link](#). Accessed: Nov 3, 2021.

Ministry of Indigenous Affairs

2022 *Saugeen Tract Purchase*. [Website Link](#). Accessed December 15, 2022.

Ministry of Tourism and Culture (MTC; now Ministry of Citizenship and Multiculturalism)

2011 *Standards and Guidelines for Consultant Archaeologists*. Toronto: Queen's Printer for Ontario.

2024 *Ontario's Past Portal, Online Database*. Queen's Printer for Ontario. [Website Link](#). Accessed January 29, 2024.

Norquay, Naomi and Pariss Garramone

2016 *The Old Durham Road Black Pioneer Settlement: Contested Place as an Invitation to Curriculum*. *Journal of the Canadian Association for Curriculum Studies (JCACS)* 13(2), 20–31.

Old Home Week Association

1935 *Historical Review of Durham, Ontario*. Durham: Published by authority of Old Home Week Association.



Olthys-Kleer Townshend LLP (OKT)

2021 Saugeen Ojibway Nation Treaty and Title Claim. [Website Link](#). Accessed December 15, 2022.

Ontario Geological Survey

2010 Surficial Geology of Southern Ontario. *Ontario Geological Survey, Ministry of Northern Development, Mines and Forestry*, Miscellaneous Release-Data I28-REV.

Ontario Ministry of Municipal Affairs and Housing (OMMAH)

2020 *Provincial Policy Statement, 2020*. Queen's Printer for Ontario. [Website Link](#). Accessed: April 7, 2022.

OpenStreetMap

2021 Geofabrik Extract. [Website Link](#). Accessed December 10, 2021.

Saugeen Ojibway Nation (SON)

2021 1836 – Saugeen Treaty No. 45 ½. [Website Link](#). Accessed December 15, 2022.

Tooker, E.

1964 *An Ethnography of the Huron Indians 1615-1649*. Smithsonian Institute: Washington DC.



7 IMAGES

Image 1: Test Pit Survey at 5 m Interval

Looking West



Image 2: Test Pit Survey at 5 m Interval

Looking Southwest



Image 3: Test Pit Survey at 5 m Interval

Looking West



Image 4: Typical Test Pit



Image 5: Typical Test Pit



Image 6: Typical Test Pit



Image 7: Test Pit in Vicinity of Home with Construction Debris



Image 8: Residential Dwelling, Gravel Driveway and Shed

Looking West



Image 9: Barn and Gravel Driveway

Looking Southeast



Image 10: Built Up Pathway

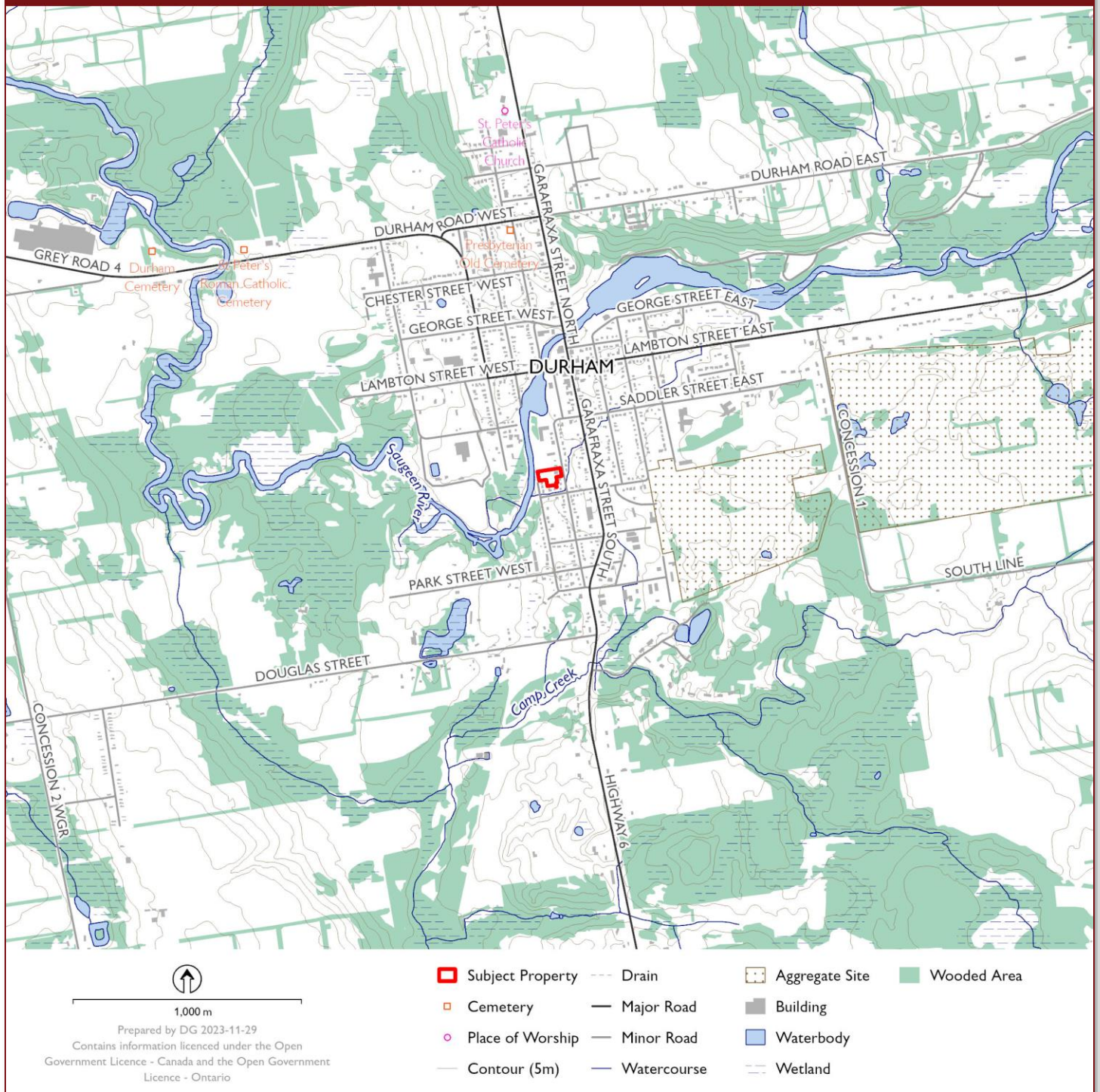
Looking Southeast





8 MAPS

PROJECT LOCATION



Map 1: Location of the Subject Property in Durham, ON

AERIAL PHOTOGRAPHY
GREY COUNTY ORTHOPHOTOGRAPHY (2020)

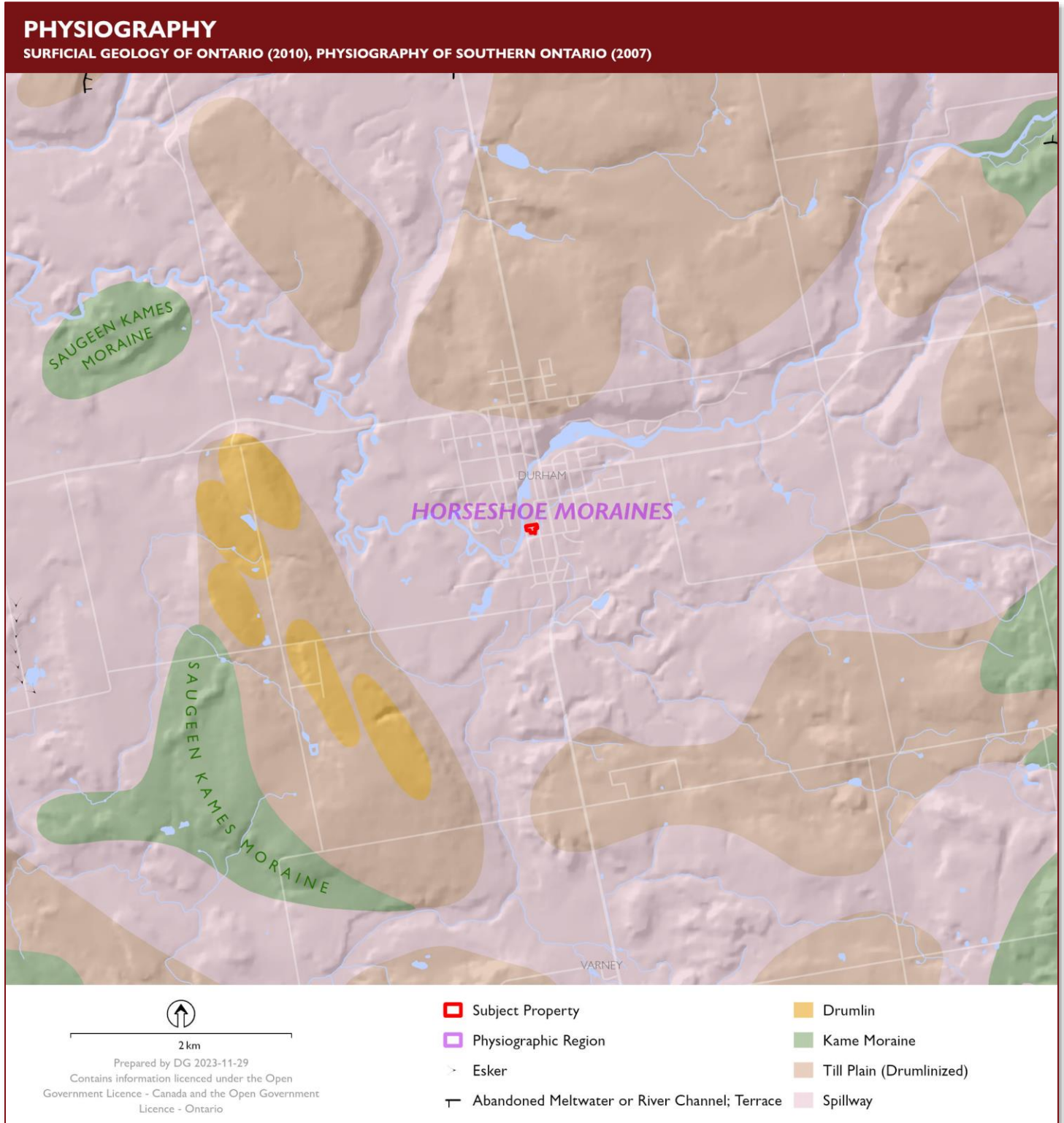


90 m

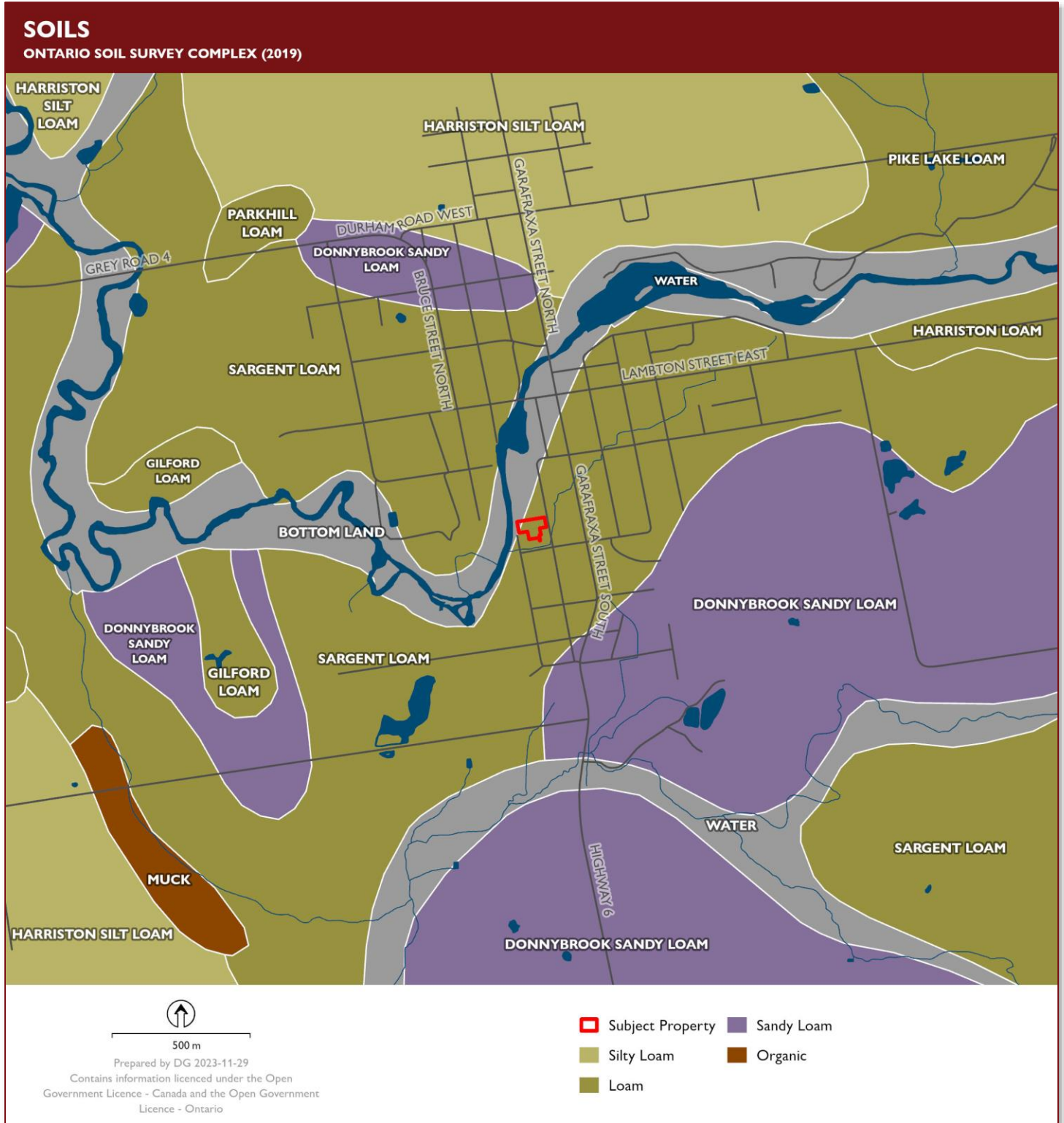
Prepared by DG 2023-11-29
Contains information licenced under the Open
Government Licence - Canada and the Open Government
Licence - Ontario

Subject Property

Map 2: Aerial Photograph Showing the Location of the Subject Property

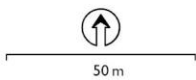


Map 3: Physiography Within the Vicinity of the Subject Property



Map 4: Soils Within the Vicinity of the Subject Property

1849 HISTORIC MAP
PLAN OF THE TOWN PLOT OF DURHAM



Prepared by DG 2023-11-29
Contains information licenced under the Open
Government Licence - Canada and the Open Government
Licence - Ontario

Subject Property

Map 5: Location of the Subject Property Shown on the 1849 Plan of Durham

1880 HISTORIC MAP

ILLUSTRATED HISTORICAL ATLAS OF THE COUNTIES OF GREY & BRUCE, ONT

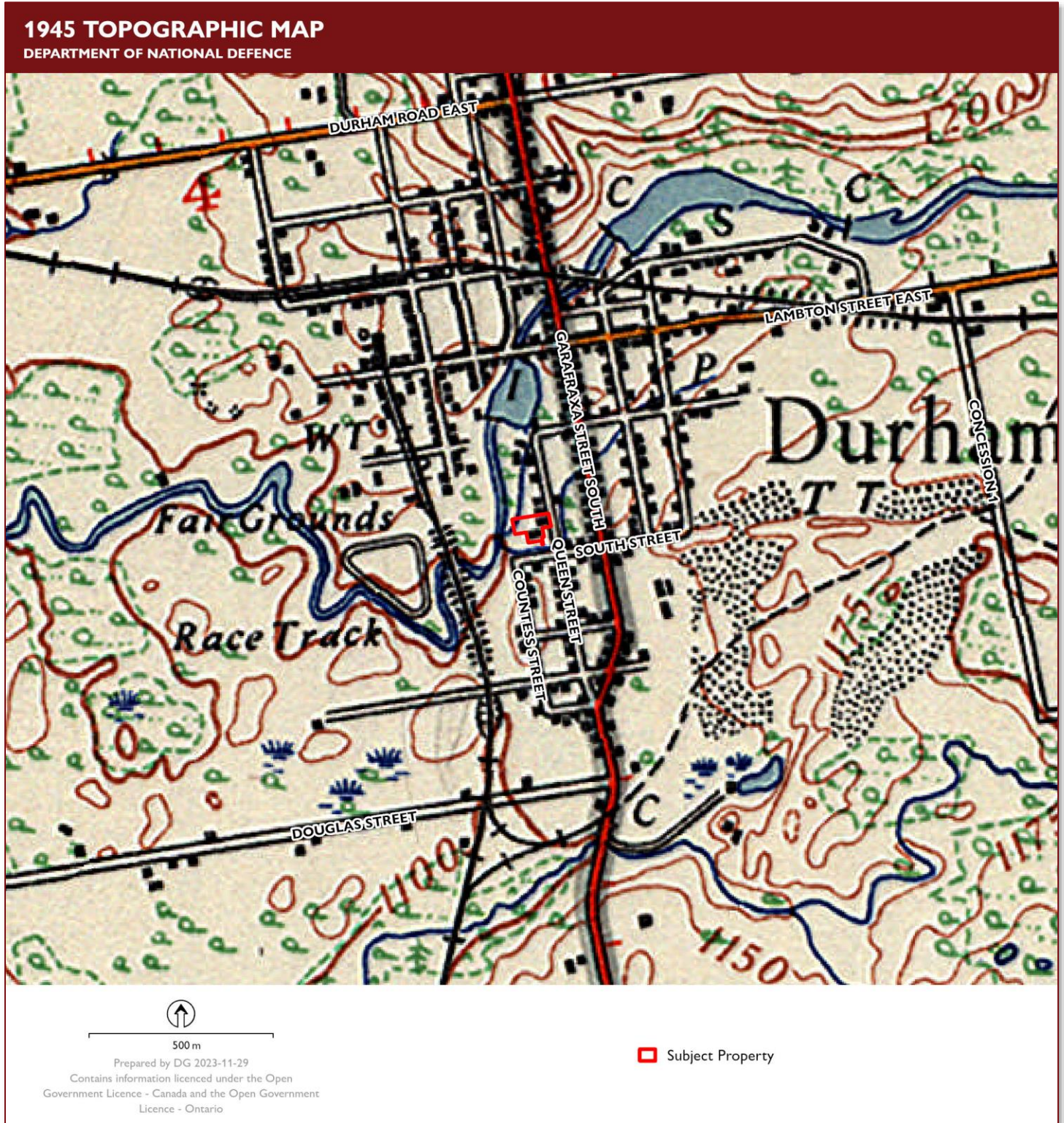


1,000 m

Prepared by DG 2023-11-29
Contains information licenced under the Open
Government Licence - Canada and the Open Government
Licence - Ontario

 Subject Property

Map 6: Subject Property Shown on the 1880 Map of Bentinck Township



Map 7: Subject Property Shown on a 1945 Topographic Map



AERIAL PHOTOGRAPHY
HUNTING SURVEY CORPORATION LTD. (1954)



190 m

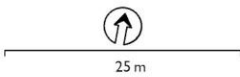
Prepared by DG 2024-01-17

Contains information licenced under the Open
Government Licence - Canada and the Open Government
Licence - Ontario

 Subject Property

Map 8: Subject Property Shown on a 1945 Topographic Map

270 QUEEN STREET, DURHAM
STAGE 2 METHODS



Prepared by DG 2024-04-22

Contains information licenced under the Open Government Licence - Canada and the Open Government Licence - Ontario

- Subject Property
- Report Photo

STAGE 2 ASSESSMENT METHODS

Areas of Archaeological Potential

■ Grassed, Treed (Test Pit Survey, 5m Interval)

Areas of Low Archaeological Potential

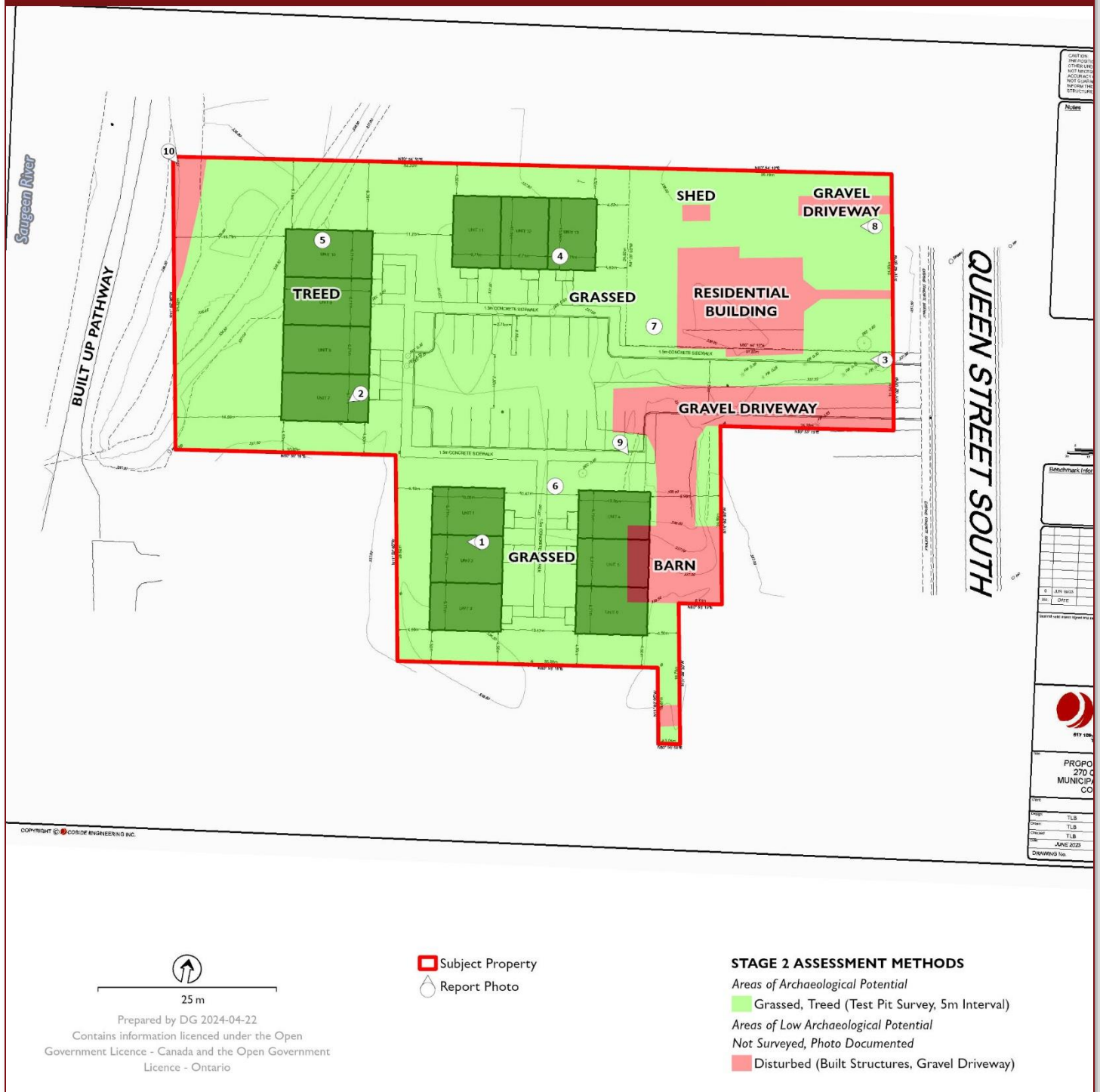
■ Not Surveyed, Photo Documented

■ Disturbed (Built Structures, Gravel Driveway)

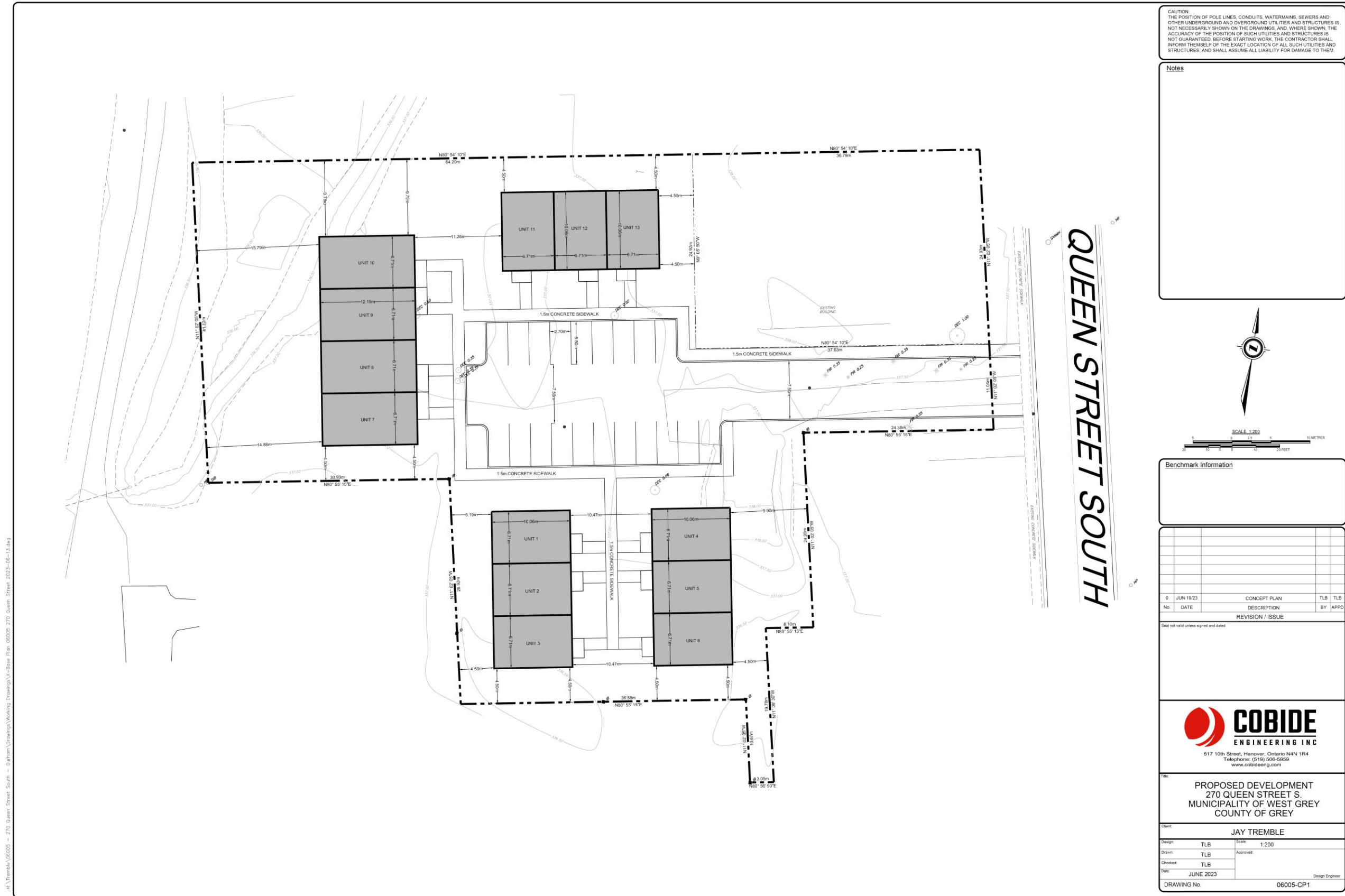
Map 9: Stage 2 Field Conditions and Assessment Methods



270 QUEEN STREET, DURHAM
STAGE 2 METHODS



Map 10: Stage 2 Field Conditions and Assessment Methods Shown on Proponent Mapping



H:\Tremble\06005 - 270 Queen Street South - Durham\Drawings\Working Drawings\A-Base Plan_2023-06-13.dwg

COPYRIGHT © COBIDE ENGINEERING INC.

Map II: Unaltered Proponent Mapping

**Stage I-2 Archaeological Assessment
270 Queen Street South
Plan 500, Part of Lots 1 and 2 W/S Queen Street and
Part of Lots 1 and 2 E/S Countess Street, Durham
Municipality of West Grey, County of Grey, Ontario**

SUPPLEMENTARY DOCUMENTATION

NOT FOR PUBLIC CIRCULATION



Licensee: Liam Browne, MA (PI048)
PIF No: PI048-0143-2024
Project No: 2023-584
Dated: April 23, 2024



Summary of Indigenous Engagement

The Saugeen Ojibway Nation (SON) were engaged as part of this project. Communications were directed through email by Liam Browne of TMHC to Robert Martin and Natalie Kuipers of SON. No SON representatives were available to take part in the Stage 2 fieldwork, permission to proceed in the absence of a SON representative was given by Natalie Kuipers to Liam Browne over email. A copy of the report was made is available to the community as requested prior to submission of the report to the MCM. **No concerns were raised with the Stage 2 fieldwork or the recommendations for the property.**